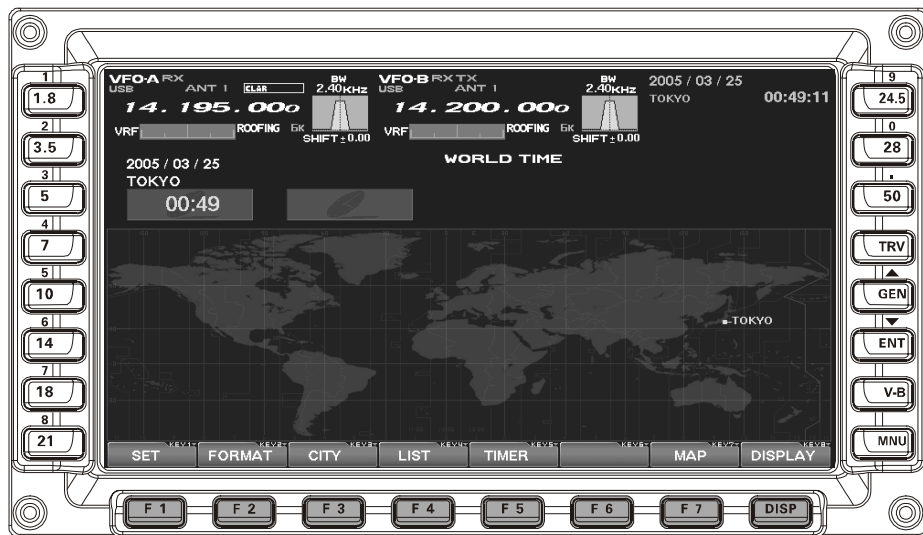


FTDx9000

TFT

OPERATION MANUAL



YAESU

PLEASE READ THIS FIRST

When turning on the transceiver for the first time, please set the local time as soon as possible. If this is not done, the various functions of the World Clock and Great Circle Map will not function correctly.

Note: If you wish to add a city to the City List that was programmed at the factory, you will need to supply your own USB or PS2 Keyboard. If you utilize one of the pre-loaded cities, a keyboard is not necessary.

You may also set up the local time for other locations, without a keyboard, using the cities that have been pre-loaded at the factory.

1. Powering Up the Transceiver

- On the rear panel, move the Power switch to the "I" position to apply power from the power supply. The transceiver will not turn on yet, but power will now be supplied to the OCXO.
- Hold in the front panel **POWER** switch to turn the transceiver on.

Note: The opening screen will appear on the TFT display, and the self-check function of the CPU inside the radio will begin. Then, the μ -Tuning circuitry will receive the data from the CPU, and it will perform its own self-check, and will preset itself to the proper settings for the current operating frequency.

While the μ -Tuning circuitry is obtaining the data, the drive mechanism will move from one end of its range to the other end (fast), and this will cause a temporary "motor" noise that can be heard; this, does not represent any trouble or problem.

When the radio is turned on for the first time, it takes about 50 seconds (from turning the radio on to completing the self-check) until the radio becomes ready to use; however, from the next time you turn it on, it will take around 10 seconds until the transceiver is ready for full operation.

2. Local Time Setup

- On the TFT, there should be a World Map displayed; if the World Map does not appear, find the **[DISP](Display)** key below and to the right of the TFT; press this key as many times as required to get the World Map to display on the TFT.
- Below the TFT, press the **[F1](SET)** key; the TFT should now show **LOCAL TIME -1**; this setting has been pre-set for Japanese time at the factory.

3. Changing the Location

- To set the (highlighted) **Time Zone**, press the **[F7](SELECT)** key to engage setting of the desired Time Zone. Use the **[F1](▼) ~ [F4](►)** keys to choose the Time Zone, then press the **[F7](SELECT)** key once more.
- The name of the country associated with the highlighted Time Zone may now be selected using the **[F1](▼) ~ [F1](►)** keys. Press **[F7](SELECT)** when you have made your selection.
- You may now choose one of the cities displayed in the same way. When you have made your choice, press the **[F7](SELECT)** key.

Advice: Depending on the country, there may be only one city (or no cities) listed. In these instances, to modify the setting, please first select the city name on the list, even if you do not see the city you want on the list; you may modify the city name later.

4. Changing the City Name

(Please connect a PS/2 or USB Keyboard (not supplied) to do manual entry of a city name. If you are not entering a new city name, please skip to step (5) below).

- Use the **[F1](▼)** and **[F2](▲)** keys to highlight the city name you wish to change. Now, press the **[F7](SELECT)** key, then enter the name of the desired city.
- When you have completed your input, press the **[F7](SELECT)** key once more.

5. Correcting the Date

- Use the **[F1](▼)** and **[F2](▲)** keys to highlight "DATE," then press the **[F7](SELECT)** key.
- Use the **[F3](◀)** and **[F4](►)** keys to navigate to each column of the date, then use the **[F1](▼)** and **[F2](▲)** keys to select the desired numbers in each column. Repeat for each column, to complete the date.
- When entry is complete, press the **[F7](SELECT)** key.

PLEASE READ THIS FIRST

6. Time Setting

- ❑ Press the [F1](▼) and [F2](▲) keys to highlight "TIME," then press the [F7](SELECT) key to enter the time entry mode.
- ❑ Use the [F3](◀) and [F4](▶) keys to navigate to the desired column in the date, then use the [F1](▼) and [F2](▲) keys to select the desired number in each column. Time is entered in 24-hour format.
- ❑ When entry is complete, press the [F7](SELECT) key.

7. Setting up Daylight Saving Time

- ❑ Once you have selected the city to be utilized, use the [F1](▼) and [F2](▲) keys to highlight DST (DAYLIGHT SAVING TIME).
- ❑ Use the [F3](◀) and [F4](▶) keys to choose ON or OFF.

8. Saving and Closing

- ❑ When you have completed all the above entries to your satisfaction, press and hold in the [F7](SELECT) key for two seconds to save all the new settings. The chosen city and time zone will appear on the World Map page.

Note: The [F1](SET) key is only used when setting the city name and local time. If you make a mistake, press the [F7](SELECT) key momentarily. Pressing the [F7](SELECT) key for two seconds will return you to the World Map screen.

BEFORE USING THE TFT DISPLAY

OPERATION OF THE TFT SCREEN

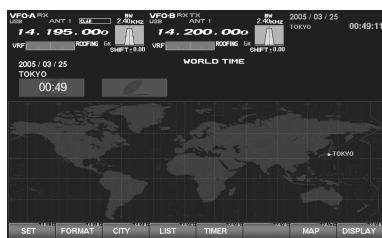
This TFT screen can show any of 8 different display options, described on the following pages. These are: World Clock, Spectrum Scope, Audio Scope/Oscilloscope, Log Book, Thermal Indication/SWR display, Great-Circle Map/Rotator Control, and the Memory Channel list. Also, the Menu will appear on the TFT, if engaged. To move to the desired screen, use the [DISP](DISPLAY) key, located at the right low end of the screen.

When the [DISP](DISPLAY) key is pressed momentarily, the screen changes, one by one, to the next consecutive.

If the [DISP](DISPLAY) key is pressed for 2 seconds, the screen goes back to the previous screen.

If you do not want to change the setting, or if you wish to suspend the setting procedure, press the [DISP](DISPLAY) key. Any changes you started will not be saved, and the screen will move forward to the next display.

On each screen, the action of the function key may vary. At the bottom area of the screen, the function is indicated; please confirm the function displayed as you read along.



"World Clock" Screen

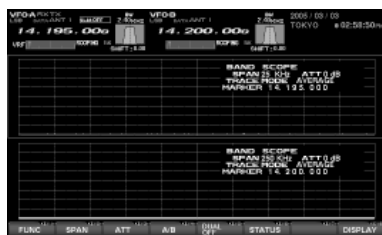


"Menu List" Screen

Press the [MNU] button

Press and hold in the [DISP(DISPLAY)] button

Press and hold in the [DISP(DISPLAY)] button



"Spectrum Scope" Screen

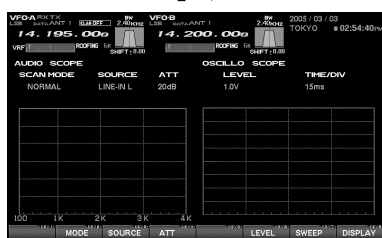


"Memory Channel List" Screen

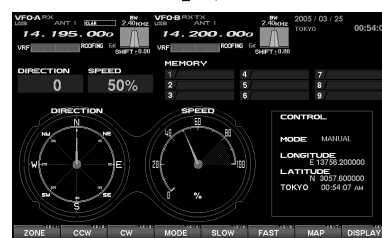
Press the [DISP(DISPLAY)] button

Press the [DISP(DISPLAY)] button

Press and hold in the [DISP(DISPLAY)] button



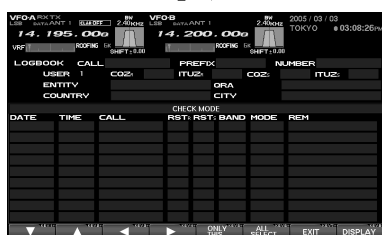
"Audio Scope/Oscillo Scope" Screen



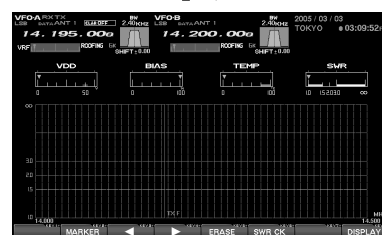
"Rotator Control" Screen

Press and hold in the [DISP(DISPLAY)] button

Press the [DISP(DISPLAY)] button



"Log Book" Screen



"SWR Monitor" Screen

Press the [DISP(DISPLAY)] button

Press and hold in the [DISP(DISPLAY)] button

BEFORE USING THE TFT DISPLAY

MENU MODE OPERATION

If you want to change a configuration setting of this radio, you are able to display the Menu mode on the TFT screen, so you can change it efficiently. In order to enter the "Menu" mode, press the **[MNU]** key momentarily; the Menu screen will now appear on the screen. By rotating the Main Tuning knob, you can move to the desired item you want to change now you can choose the revised setting by rotating the **CLAR/VFO-B** knob. It is also possible to move the Menu items and values by pressing the function keys located below the TFT screen. For details, please refer to "How to Use the Menu Mode."

When you have completed the changes to the Menu item(s), press and hold in the **[MNU]** key for 2 seconds; the setting(s) will now be saved. If you do not want to save the new setting, press the **[MNU]** key momentarily; the radio will revert to its previous condition.

There are 161 items in the Menu mode, and they are grouped; the group name is displayed at the left top of the list screen. It will be convenient for you if you initially select the group, by rotating the Main Tuning knob, and *then* select the item you want.

The groups are as follows.

1. **AGC:**
2. **DISPLAY:**
3. **FH-2:**
4. **GENERAL:**
5. **MODE-AM, MODE-CW, MODE-DATA, MODE-DM, MODE-PKT, MODE-RTTY, MODE-SSB**
6. **RX AUDIO:**
7. **RX DSP:** RX Filter bandwidth and shaping
8. **SCOPE:** Setup of the starting frequency for the Spectrum Scope
9. **TUNING:** Setup of the Dial steps
10. **TX AUDIO:** Setup of the Parametric Equalizer
11. **TX GNRL:** Setup of the

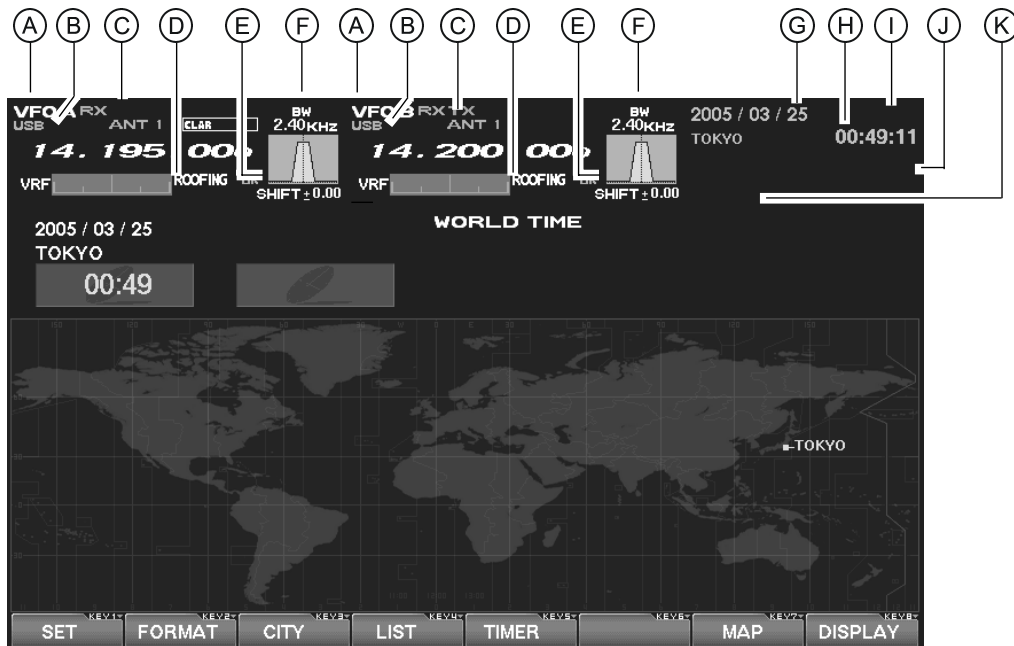
For detailed information regarding the Menu mode, please see the "How to Use the Menu Mode" section of this manual, and the operation manual of the radio.

MENU MODE RESET

It is possible to reset (only) the Menu mode settings back to their factory default. Do this if you want to clear all settings out, and start fresh with the original values.

1. Turn off the radio.
2. Turn the radio on while pressing and holding in the **[MNU]** key.

BEFORE USING THE TFT DISPLAY



Ⓐ Main (VFO-A) & Sub (VFO-B) Fields

These areas of the TFT contain information about the status of the Main (VFO-A) and Sub (VFO-B) VFOs.

Ⓑ MODE Fields

These fields indicate the operating mode in use on the above VFOs.

Ⓒ TX Frequency/Clarifier/ Antenna Selection Fields

These notations advise which VFO is being used for transmission, status of the Clarifier, and a notation of which antenna has been selected on that VFO.

Ⓓ Filter Fields

These fields note the offset status for the Tuning or VRF filters, as well as the Roofing filter selection, for each VFO.

Ⓔ Filter Shift Fields

These fields graphically depict the positions of the DSP RX filters for the Main and Sub VFOs, indicating any "IF Shift" or "Width" tuning changes applied.

Ⓕ Bandwidth Fields

This field indicates the net receiver bandwidth currently set for the Main (VFO-A) and Sub (VFO-B) VFOs.

Ⓖ Date Field

The current date is displayed here.

Ⓗ Local Time-1 Field

The current time at your location (Local Time-1) is displayed here.

Ⓘ GPS Field

If you have connected an after-market GPS unit (one providing NMEA location data) to the rear panel of the transceiver, "GPS" icon will appear here.

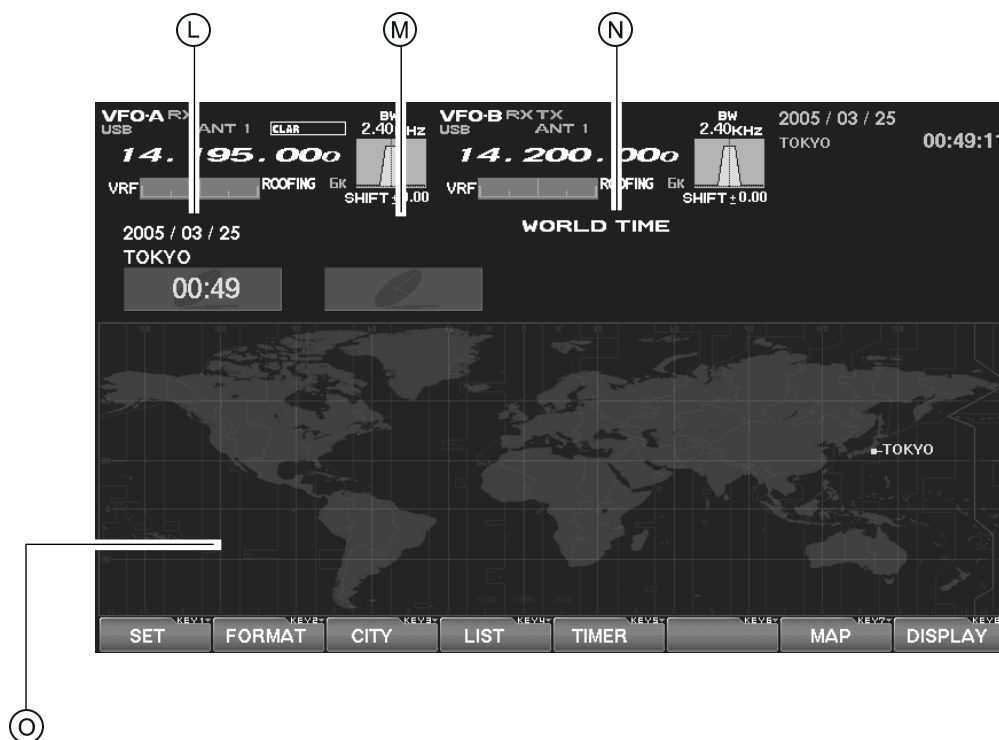
Ⓙ Local Time-2 Field

The Local Time-2 time, as programmed, will appear here.

Ⓚ Timer Field

When the On Timer has been engaged, "TIMER" will appear here; when the Alarm has been engaged, "ALARM" will appear in this field.

BEFORE USING THE TFT DISPLAY



Ⓐ Local Time-1 Field

The current time at your location (Local Time-1) is displayed here.

Ⓜ Local Time-2 Field

The Local Time-2 time, as programmed, will appear here.

Ⓝ World Time Field

This area shows the current time at the city selected on the World Map display.

Ⓞ TFT Display Pages

Individual pages are provided for a wide variety of information or command purposes. Included are the World Map page, Spectrum Scope page, Audio Scope/Oscilloscope page, TX PA Temperature/SWR page, Direction finding/Rotator Control Page, Log Book Page, Memory Channel page, and the Menu page.

TABLE OF CONTENTS

Before Using the TFT Display	2
How to Use the World Clock function	7
About the World Clock	7
Explanation of the Function Keys on the World Map Screen	7
SET (LOCAL-TIME1) Setup	8
FORMAT (TIME FORMAT) Setup	8
City Selection	9
Miscellaneous World Clock Setup Options	10
OFF Timer and Alarm Setup	11
Spectrum Scope	12
About the Spectrum Scope	12
Explanation of the Function Keys on the Spectrum Scope Screen	12
Using the CTR (Center) Display Mode	14
Using the LBWS (Limited Band Width Sweep) Function	16
Using the FIX (Fixed) Mode	17
Audio Scope/Oscilloscope	18
About the Audio Scope/Oscilloscope	18
Explanation of the Function Keys on the Audio Scope and Oscilloscope Screen	18
Using the Audio Scope	19
Audio Scope Specifications	19
Using the Oscilloscope	20
Oscilloscope Specifications	20
Log Book Function	22
About the Log Book	22
Explanation of the Function Keys on the Log Book Screen	22
Log Book Example	23
CONFIG Setting	24
CONFIG SETTING Mode Setup	25
Log Book Data Input	26
Log Book Previous-QSO Check (CHECK)	27
Editing Log Book Entries	27
Saving Log Book	28
Loading Log Data (LOAD)	28
Summary Check	29
Temperature/SWR Indication	30
About the Temperature/SWR Indication	30
Explanation of the Function Keys on the Temperature/SWR Indication Screen	30
Graphic Meter Display	31
Swept SWR Display	31
Using the Marker on the SWR Graph	32
Great Circle Map/Rotator Control Function	34
About the Great Circle Map/Rotator Control Function Screen	34
Explanation of the Function Keys on the Great Circle Map/Rotator Control Function Screen	34
Manual Mode	36
Preset Mode	37
Memory Mode	38
Using the Memory Channel List	39
About the Memory Channel List	39
Explanation of the Function Keys on the Memory Channel List Screen	39
Erasing a Memory Channel/Restoring an Erased Memory Channel	40
Saving Memory Data	40
Loading Memory Data	41
Using the MENU Mode	42
About the MENU Mode	42
Menu Mode Reset	42
Explanation of the Function Keys on the Menu Mode Screen	43
Menu Mode Configuration Changes	44
Saving Menu Configuration Data	45
Loading Menu Data	46

HOW TO USE THE WORLD CLOCK

ABOUT THE WORLD CLOCK

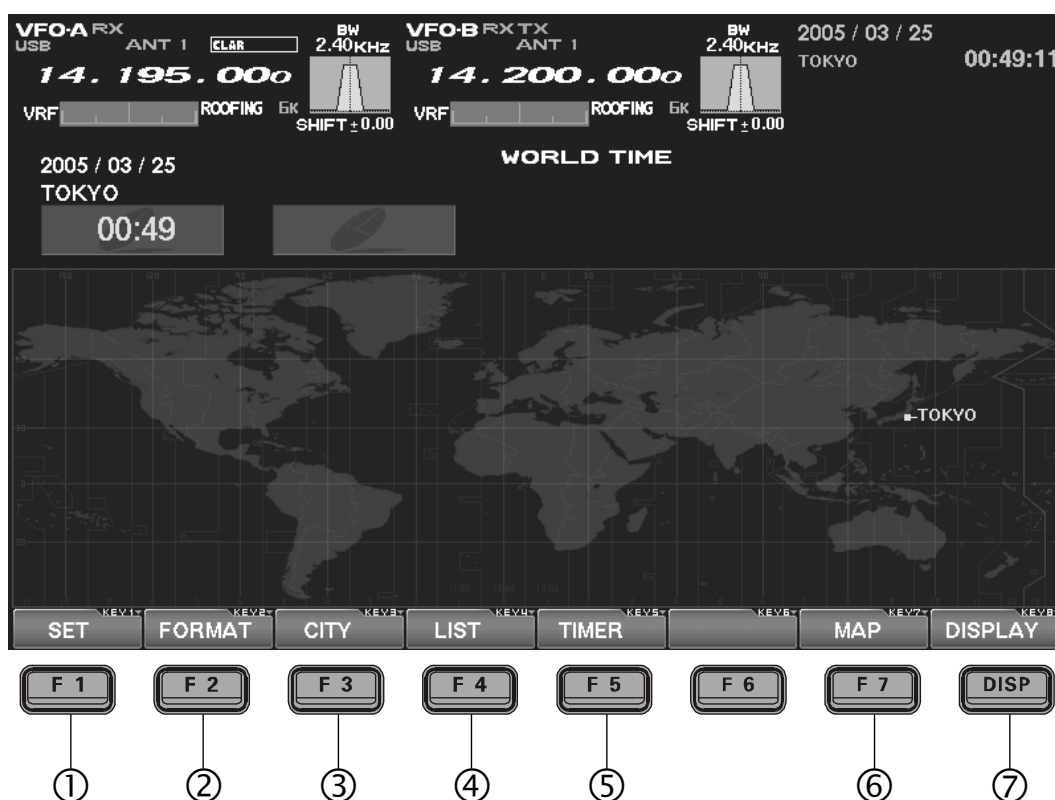
The World Clock displays the time in various countries, and the day/night areas are also indicated on the map, including the Grey Line near the terminator. The difference between the daylight areas in the Southern and Northern Hemispheres is displayed correctly, and is updated in real time. For DX hunting, this can be a very important and convenient tool for specific long distance HF QSOs, for example, as you can target the time the other station might have access to, say, the 80-meter band, enabling you to complete a QSO. In addition, an alarm is provided which beeps with respect to a designated area at a designated time, and the auto-off timer can also be

matched to any desired area you stipulate.

Note: When you turn on the transceiver for the first time after your purchasing this radio, please set the local time (the place where you operate this radio), and confirm this setting. If this is not done, the various functions of the World clock and Great Circle map will not function correctly. Regarding the setting of the Local time, please see the "PLEASE READ THIS FIRST" information.

If the World Map does not initially appear, press the **[DISP](DISPLAY)** key (momentarily) as many times as necessary to display the World Map screen.

EXPLANATION OF THE FUNCTION KEYS ON THE WORLD MAP SCREEN



① **[F1](SET)**

Selects the LOCAL TIME-1 setup screen.

② **[F2](FORMAT)**

Selects 12-hour or 24-hour time format.

③ **[F3](CITY)**

Selects the World Map for City selection.

④ **[F4](LIST)**

Displays the City setup list.

⑤ **[F5](TIMER)**

Selects the TIMER setup screen.

⑥ **[F7](MAP)**

This lets you select between the World Map regular screen and the map that includes Daylight/Darkness display.

⑦ **[DISP](DISPLAY)**

Press this key to switch the TFT to the "SPECTRUM SCOPE" screen.

Press and hold in this key to switch the TFT to the "MEMORY CHANNEL LIST" screen.

HOW TO USE THE WORLD CLOCK

SET (LOCAL-TIME1) SETUP

Please see the "PLEASE READ THIS FIRST" information.

FORMAT (TIME FORMAT) SETUP

This procedure lets you choose between 12-hour and 24-hour time display format.

1. While the World Map is displayed, press [F2](FORMAT) key to select TIME FORMAT.
2. Press the [F1](▼), [F2](▲), [F3](◀), [F4](▶) key, and select 12-hour or 24-hour display for LOCAL-TIME1, CLOCAL-TIME2, and the WORLD CITY LIST.

When SEC is set to "ON", the "seconds" digits will be shown at the top right corner of the TFT screen, in the Local Time indication area.

Advice: If you press [F6](SECADJ) key, the "seconds" indication will reset to "00." Use this to sync your clock to a time standard such as WWV.

3. When all settings are complete, press and hold in [F7](SELECT) key for 2 seconds to exit.



↑
"TIME FORMAT" Select



↑
"SELECT" Keys

↑
Set to "00" Second

HOW TO USE THE WORLD CLOCK

CITY SELECTION

It is possible to select any city name which is displayed on the World Clock screen.

Advice: The order of the display of the cities can be changed later; for now, please just select one of the supplied city names.

There may only be one city shown in some countries; however, it is possible to add cities, if desired.

If you wish to add a city to the City List that was programmed at the factory, you will need to supply your own USB or PS/2 Keyboard. If you utilize one of the pre-loaded cities, a keyboard is not necessary.

1. Press the [F3](CITY) key while the World Map is displayed, and the TFT will show the "Area Selection" screen.
2. Press the [F1](▼), [F2](▲), [F3](◀), [F4](▶) keys to select the time zone in which the desired city is located.
3. Confirm that the desired area is highlighted, and press the [F7](SELECT) key momentarily. Now the country list for the selected zone will be displayed.
4. Use the [F1](▼), [F2](▲), [F3](◀), [F4](▶) keys to select the desired country in this area.
5. Now press the [F7](SELECT) key momentarily, and you will see the list of the city names in the country selected.
6. Press the [F1](▼), [F2](▲), [F3](◀), [F4](▶) key to select the desired city. Even if the city displayed is the only one in the country, select it anyway.
7. Once you have pressed the [F7](SELECT) key momentarily, the selected country name and the city name will be indicated, thanks to the procedure mentioned above. If you want to input a city name which is not in the list, press the [F7](SELECT) key after confirming that the city name is highlighted. Then, enter the city name you want.
8. Press the [F1](▼), [F2](▲), [F3](◀), [F4](▶) key to set DAYLIGHT SAVING TIME (Summer Time), DISPLAY MAP (display or not display city names on the World Clock screen), or HIGHLIGHT (select highlighted indication (yellow) or normal (white) indication).
9. When finished, press and hold in the [F7](SELECT) key for 2 seconds to exit.



"AREA SELECTION" SCREEN



"COUNTRY SELECTION" SCREEN



HOW TO USE THE WORLD CLOCK

MISCELLANEOUS WORLD CLOCK SETUP OPTIONS

It is possible to change the order of selection of the city times, as well as the display color, etc.

1. On the World Map Screen, press the [F4](LIST) key to select the "City Name List" screen.
2. If you want to change the order of the city times as indicated at the middle of the TFT screen, press the [F1](▼) or [F2](▲) keys to move the cursor to the city name you want to change the position of. When the [F6](DOWN) key is pressed, the position goes downward. If you need to move it further, repeat as necessary.
3. If you want to change other settings of a city, select the city name by pressing the [F1](q) or [F2](p) keys to highlight the city, then press the [F7](SELECT) key momentarily. Now the screen will change to the city setup screen, where the following settings can be done: DAYLIGHT SAVING TIME (to select Summer time), DISPLAY MAP (display or not display city names on the World Clock screen), and HIGHLIGHT (select yellow or white highlighting indication for cities).
4. If you want to delete a city from the World Clock screen, move the cursor to the city name by pressing the [F1](▼) or [F2](▲) keys, then press the [F4](DEL) key.
5. When finished, press and hold in [F7](SELECT) for 2 seconds to exit.

Advice: On the DISPLAY MAP setting, if the city name indication is selected, the city name will be displayed on the World Map. When "NO" is selected, the city name will not be displayed, and only the city name and the current time is indicated at the middle of the TFT screen.

For the HIGHLIGHT setting (city name: highlighted or not highlighted), if "Highlight" (YES) is selected, the city name on the world map will be shown in yellow font color.

If "NOT Highlighted" (NO) is selected, the city name will be indicated in white.



↑
"LIST" Select
↓



↑
"SELECT" Keys "DELETE" Key

HOW TO USE THE WORLD CLOCK

OFF TIMER AND ALARM SETUP

It is easy to set the OFF Timer and Alarm times.

As to the OFF TIMEER, countdown intervals of 120/90/60/30/15 minutes, and OFF, can be selected.

For the alarm setting, it is possible to choose either LOCAL-TIME1 or LOCAL-TIME2, set the alarm time, set the Alarm ON or OFF, and/or sound the alarm one time only or every day.

1. On the World Map screen, press the [F5](TIMER) key to move to the OFF TIMER and ALARM setup screen.
2. Press the [F1](▼), [F2](▲), [F3](◀), [F4](▶) key to move the cursor to the desired setup item; the selected item will be highlighted.

OFF TIMER setup:

120/90/60/30/15 minutes, and OFF

ALARM setup:

(When setting up the Alarm, be sure to set the OFF TIMER setting to OFF!)

TIME ZONE (LOCAL TIME-1/LOCAL TIME-2)

ALARM TIME

ALARM ON/OFF

CYCLE (ONCE/DAILY)

3. Press and hold in [F7](SELECT) key for 2 seconds to close and exit.

Advice: When the OFF timer is engaged (power is shut off), the condition of the radio is the same as if the power switch on the front panel has been turned off. The Main power (circuit breaker) is not turned off. Therefore, power to the OCXO will be Maintained, retaining the high frequency stability.

The Alarm will ring for around 60 seconds. If you want to stop the alarm, press any of the keys located on the front panel.



OFF TIMER AND ALARM SETUP PAGE

SPECTRUM SCOPE

ABOUT THE SPECTRUM SCOPE

This page displays the Spectrum Scope which is convenient for monitoring band activity.

The entire screen will become the spectrum display, and you can see both strong and weak signals clearly and easily. Not only the Main (VFO-A) is shown, but the spectrum of the Sub (VFO-B) side can be also switched in and displayed simultaneously.

Besides simultaneous display of the Main (VFO-A) and Sub (VFO-B) spectra, the LBWS function allow you to realize very high-speed signal detection over a limited band segment. The CTR mode let you monitor close by your current frequency (your frequency is located at the center of the screen), and the FIX mode can also be engaged, whereby the left edge frequency is fixed. These features have been carefully considered for their utility in actual Amateur Ra-

dio operation.

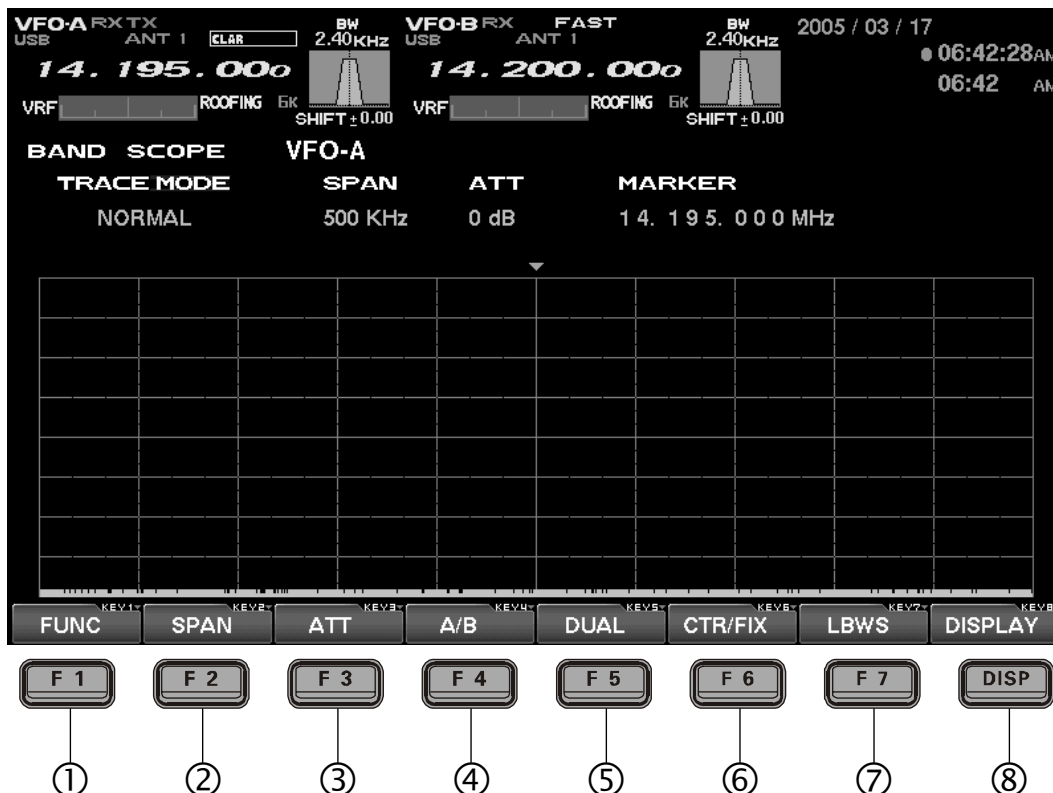
If the Spectrum Scope is not currently displayed, press the [DISP](DISPLAY) key momentarily as many times as needed to bring up the Spectrum Scope display screen.

Advice: The Spectrum Scope function of the FTdx9000 is a very intelligent capability, and it includes a wide array functions; if you lose your way during operation of this function, press the [DISP](DISPLAY) key momentarily to change the screen, and then return again to the Spectrum Scope screen.

Quick Point: The vertical axis of the Spectrum Scope is 10 dB per division. During transmission, the transmitter's waveform will be displayed.

EXPLANATION OF THE FUNCTION KEYS ON THE SPECTRUM SCOPE SCREEN

Below you will find the explanation of the function keys utilized while the Spectrum Scope is displayed. Depending on the individual screen in use, the functions of the function keys located just below the TFT screen varies. Please confirm the function displayed on the screen during operation.



① [F1](FUNC)

Moves you to the function screen of the Spectrum Scope used for setup of the MKR (Marker) function, etc.

Advice: On this screen, the functions assigned to the function keys can be changed. If you want to go back to the previous screen, press the [F7](EXIT) key.

② [F2](SPAN) "Bandwidth"

By pressing this key momentarily, it is possible to set the range of frequencies from the left edge to the right edge. If the setting is toggled to 2500 kHz, and you press this key once more, the span returns to 25 kHz again. At the top of the screen, the current span is indicated below the span indication.

EXPLANATION OF THE FUNCTION KEYS ON THE SPECTRUM SCOPE SCREEN

25 kHz → 50 kHz → 100 kHz → 250 kHz →
500 kHz → 1000 kHz → 2500 kHz → 25 kHz

③ [F3](ATT) “Attenuator”

By pressing this key, the attenuation can be switched as shown below. The noise level on the band will vary according to conditions, your antenna, the time of day, etc.; please select the appropriate value for current conditions.

0 dB → 10 dB → 20 dB → 0 dB

④ [F4](A/B)

Selects the VFO which is to be shown.

In the case of “Single” display, the Main (VFO-A) and Sub (VFO-B) VFOs can be toggled alternately. In the “Dual” mode, both VFOs will be shown.

⑤ [F5](DUAL)

This key switches between Single and Dual VFO Spectrum Scope display. When Dual is selected, the Main VFO will occupy the upper position, and the Sub VFO the lower.

When this key is pressed once more, the radio will revert to “Single” display. If you want to change the setup of a Spectrum Scope VFO, press the [F4](A/B) key. In this case, the frame will move to the upper side or lower side. Select the side which you want to change, then press the [F3](ATT) key or the [F2](SPAN) key to change those respective settings just for the selected VFO.

In the Dual display mode, when you want to confirm the setup situation, press the [F6](STATUS) key to show the current settings for that screen. Press the key once again to make the setup screen disappear.

⑥ [F6](CTR/FIX)

By pressing this key, it is possible to switch between the CTR mode and FIX mode.

In the CTR mode, the current operating frequency is displayed at the center of the screen; in the FIX mode, the frequency selected via the Menu is fixed at the left edge of the display.

Advice: In either CTR or the FIX mode, the current operating frequency is indicated on the screen by the yellow arrow (▼), for ease of status recognition.

⑦ [F7](LBWS)

Press this key to activate the “Limited Band Width Sweep” (LBWS) function, which permits high-speed sweeping of a band segment.

As the bandwidth is set narrower, the sweep speed becomes faster, allowing the scope to capture signals with quicker resolution. The bandwidth can be set to 50 %, 30 % or 10 % of the full span. The sweep speed becomes faster by the following amounts:

50 %: about 2 times faster

30 %: about 3 times faster

10 %: about 10 times faster

NORMAL → LBWS-1(50%) →

LBWS-2(30%) → LBWS-3(10%) → NORMAL

Advice: When you enter the LBWS mode, the function keys below the TFT display change.

It is possible to move the sweep position by pressing the [F5](◀) and [F6](▶) key.

If you want to return to normal operation, press [F6](LBWS) key as needed.

Please note that LBWS can not be used in the FIX mode. Please use LBWS only in the CTR mode.

⑧ [DISP](DISPLAY)

Press this key to switch the TFT to the “Audio SCOPE/OSCILLOSCOPE” screen.

Press and hold in this key to switch the TFT to the “WORLD CLOCK” screen.

FIX MODE SETUP (LEFT EDGE FREQUENCY)

Press the [MNU] key momentarily to enter the Menu mode. Select the item which you want to change by rotating the Main Tuning knob (in this case, the item will be one of the items in the range from SCOPE “108: MAIN FIX 1.8 MHz” to “129: SUB FIX 50MHz”). Then change the setting by rotating the CLAR/VFO-B knob.

When the change is completed, **press and hold** in the [MNU] key for 2 seconds to save the change.

If you do not want to save the change, press the [MNU] key momentarily. The radio will go back to the previous condition/situation.

There are many setup items in the Menu mode, and they are grouped for easy recognition; the group name is displayed at the top left corner of the list screen. It is usually more convenient if you initially select the group by rotating the Main Dial, and then select the item you want.

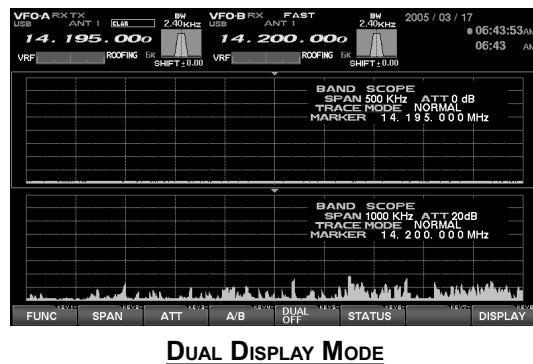
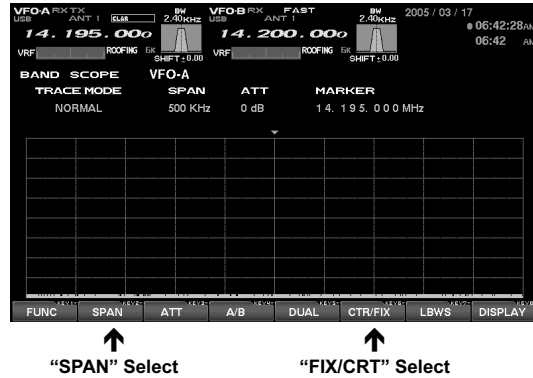
SPECTRUM SCOPE

USING THE CTR (CENTER) DISPLAY MODE

It is possible to switch between the Main (VFO-A) and Sub (VFO-B) VFOs. Also, dual display of both VFOs is available (Upper: Main (VFO-A) and Lower: Sub (VFO-B)).

Also, the LBWS (Limited Band Width Sweep) mode lets you perform a high-speed, high-resolution sweep of a limited band segment.

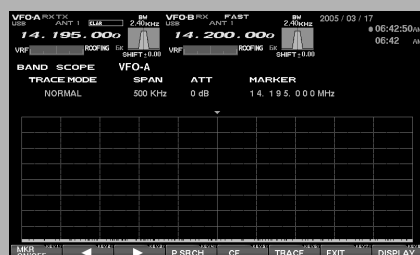
1. Press the **[F6](CTR/FIX)** key to change to the CTR mode.
2. By pressing **[F6](CTR/FIX)** key, the CTR mode and the FIX mode will be toggled alternately. In the CTR mode, the center frequency (your current operating frequency) will displayed and the frequency indication located at the mid of the display will be shown as FREQUENCY. Also, the yellow "▼" arrow will appear at the center of the display, indicating your current operating frequency.
3. Press the **[F2](SPAN)** key to select the desired frequency span to monitor.
By pressing the **[F2](SPAN)** key, the span will change as follows.
25 kHz → 50 kHz → 100 kHz → 250 kHz →
500 kHz → 1000 kHz → 2500 kHz → 25 kHz
4. Press this key to select the attenuation value according to current propagation conditions, your operating frequency and antenna, etc.
0 dB → 10 dB → 20 dB → 0 dB
5. Press the **[F4](A/B)** key to select the desired VFO to monitor.
6. If you want to display both VFO spectra, press the **[F5](DUAL)** key to engage the dual display mode.
The Main (VFO-A) will appear in the upper display field, and the Sub (VFO-B) will appear in the lower. When dual display is engaged, if the **[F6](STATUS)** key is pressed, the setup status will be indicated on the screen. When this key is pressed again, the setup status screen will disappear.



DUAL DISPLAY MODE

USING THE MARKER

- Press the **[F1](FUNC)** key to show the screen for setup of the Marker. The indication **[F1](FUNC)** will change to **[F1](MKR ON/OFF)**; now press **[F1](MKR ON/OFF)** once again, and the Marker line will be displayed at the center of the screen.
- It is possible to change the position of the marker by pressing the **[F2](◀)** and **[F3](▶)** key. If you want to center on a strong signal, you can move the marker to the screen position occupied by that signal. When the **[F5](CF)** key is pressed momentarily (one touch), the marker position will return to the center.
- In order to remove the marker, press the **[F1](MKR ON/OFF)** key.
- When you want to return to the Spectrum Scope screen, press the **[F7](EXIT)** key. If the screen returns to the previous screen (with the Marker displayed), the marker will remain on the screen.



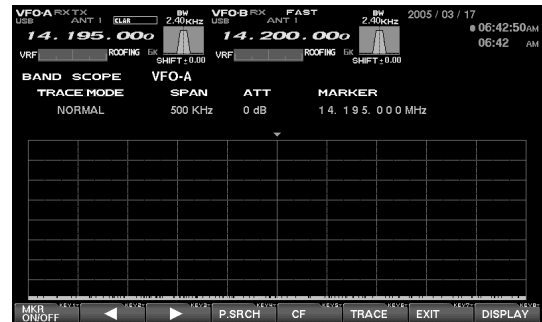
USING THE CTR (CENTER) DISPLAY MODE

Miscellaneous Functions

SEARCHING FOR STRONG SIGNALS

USING THE PEAK SEARCH FEATURE

1. Press the [F1](FUNC) key to show the screen for setup of the Marker.
2. Press the [F4](P.SRCH) key to move the marker to the highest peak signal frequency. With each press the [F4](P.SRCH) key, the Marker will shift to the strongest signal frequency away from the current frequency.



↑
"PEAK SERCH" mode

CHANGING THE TRACE MODE

1. Press the [F1](FUNC) key to show the screen for setup of the Marker.
2. Press the [F6](TRACE) key to select the Trace mode of the Spectrum Scope.

The Trace mode selections are shown below.

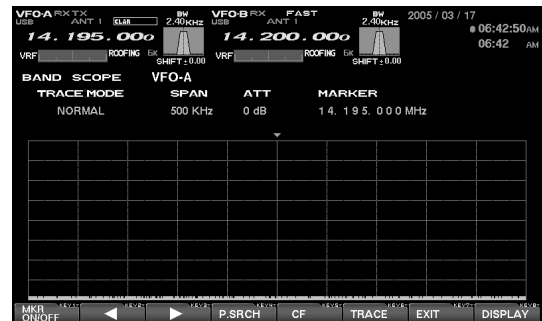
NORMAL → AVERAGE →

PEAK HOLD P → NORMAL

NORMAL: The real-time signal strength will be displayed. Normally, you will want to use this mode.

AVERAGE: The averaged signal strength will be displayed.

PEAK HOLD P: The signal level will be displayed, with peak strengths held for a few seconds.



↑
"TRACE" mode

SPECTRUM SCOPE

USING THE LBWS (LIMITED BAND WIDTH SWEEP) FUNCTION

LBWS (Limited Band Width Sweep) is a function that sweeps a limited *segment* of the Spectrum Scope span without *changing* the span (bandwidth). As the sweep segment becomes narrower, the speed becomes faster, and the accuracy and resolution become enhanced.

The bandwidth can be set to 50 %, 30 %, or 10 % of the full span. The sweep speed will increase as follows: 50 %: about 2 times faster, 30 %: about 3 times faster, 10 %: about 10 times faster

1. By pressing the [F7](CTR/FIX) key repeatedly, the CTR mode and the FIX mode will be toggled alternately.
2. By pressing the [F2](SPAN) key, you can set the bandwidth of the span viewed using the Spectrum Scope.

By pressing the [F2](SPAN) key, the span will change as follows.

25 kHz → 50 kHz → 100 kHz → 250 kHz →
500 kHz → 1000 kHz → 2500 kHz → 25 kHz

3. Press the [F3](ATT) key to set the desired attenuation value.

By pressing the [F3](ATT) key, the attenuation will change as follows.

0 dB → 10 dB → 20 dB → 0 dB

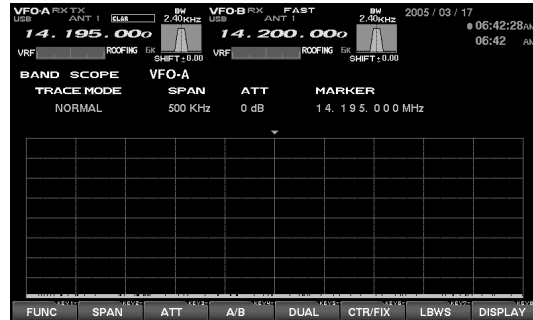
4. By pressing the [F6](LBWS) key, the LBWS segment width will change as follows.

NORMAL → LBWS-1(50%) →
LBWS-2(30%) → LBWS-3(10%) → NORMAL

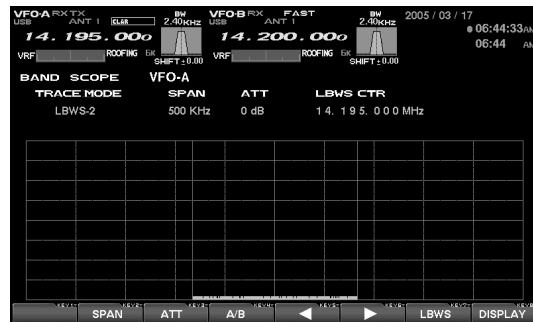
5. Press the [F4](A/B) key to select the Main (VFO-A) or Sub (VFO-B) VFO.

Advice: Please note that the LBWS feature can not be used in the FIX mode. Please use LBWS only in the CTR mode.

While LBWS is engaged, it is not possible to switch to the dual display mode.



↑
"FIX/CRT" Select
↓



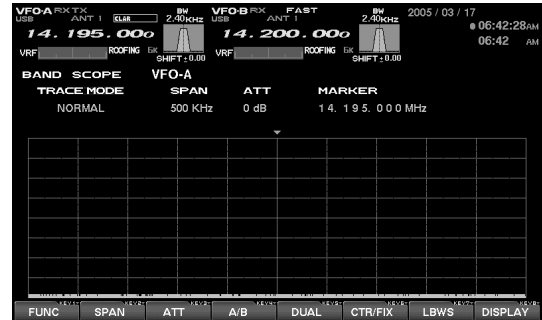
↑
"LBWS WIDTH" Select

USING THE FIX (FIXED) MODE

This feature is convenient when you want to monitor an entire amateur band.

The starting point, located at the left edge of the screen, can be set via the Menu. Even if the screen span (bandwidth) is changed, the start frequency will *not* be changed. By watching the screen, you can move your operation to frequencies where interesting activity appears on the display. Just as with the CTR mode, it is possible to toggle the Main (VFO-A) or Sub (VFO-B) VFOs. It is also possible to utilize a dual display, with the Main (VFO-A) VFO in the upper position, and the Sub (VFO-B) VFO below.

1. By pressing the [F7](CTR/FIX) key, it is possible to switch between the CTR mode and the FIX mode. Select the CTR mode at this time.
2. Press the [F2](SPAN) key to set the desired value for the Span (bandwidth). By pressing the [F2](SPAN) key, the span will change as follows.
25 kHz → 50 kHz → 100 kHz → 250 kHz →
500 kHz → 1000 kHz → 2500 kHz → 25 kHz
3. Press the [F3](ATT) key to set the desired attenuation value. By pressing the [F3](ATT) key, the attenuation will change as follows.
0 dB → 10 dB → 20 dB → 0 dB
4. Press the [F4](A/B) key to toggle between the Main (VFO-A) and Sub (VFO-B) VFOs.
5. Press the [F5](DUAL) key to engage dual spectral display.
The Main VFO will appear in the upper display field, and the Sub VFO will appear in the lower.
When you rotate the Main Tuning knob for Main (VFO-A) or CLAR/VFO-B knob for Sub (VFO-B), the yellow arrow "▼" will move to follow your receive frequency.
If the receive frequency is outside of the screen, the position of the operating frequency will be "shown" in the lower area of the display as "<<" ">>", and "RCV Freq is out of range" will also be displayed.
6. Just as in the CTR mode, you can use the Marker.
Please see page 14 for information on using the marker.



↑ "SPAN" Select ↑ "ATT" Select ↑ "FIX/CRT" Select

Advice: In either CTR or FIX mode, the current operating frequency will be indicated on the screen by the yellow arrow "▼."

SETTING THE LEFT EDGE FREQUENCY FOR THE FIX MODE

Press the [MNU] key momentarily to enter the Menu mode. Select the item which you want to change by rotating the Main dial (in this case, the items will be in the range from SCOPE "107: MAIN FIX 1.8 MHz" to "128: SUB FIX 50MHz"). Now you may change the setting by rotating the Sub dial.

When the change(s) are completed, press and hold in the [MNU] key for 2 seconds to save the change.

If you do not want to save the change(s), press the [MNU] key momentarily. The radio will go back to its previous condition/situation.

There are many setup items in the Menu, and they are grouped; the group name is displayed at the top left area of the list screen. It will generally be more convenient for you if you initially select the group, by rotating the Main Dial, and then select the item you want to work on.

AUDIO SCOPE AND OSCILLOSCOPE

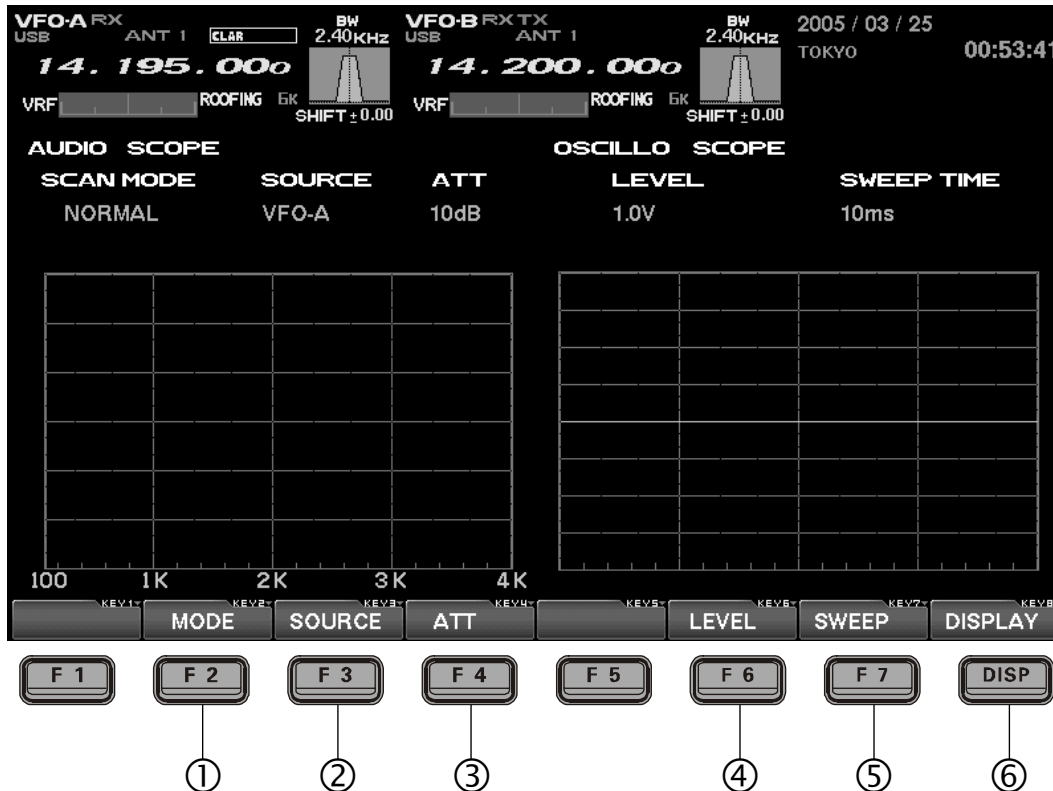
ABOUT THE AUDIO SCOPE AND OSCILLOSCOPE

It is possible to show both the Audio Scope and the Oscilloscope displays simultaneously.

With the Audio scope, the horizontal line represents frequency, and you can use this function check the frequency response within the TX bandwidth. In the Oscilloscope mode, the horizontal line represents time, and you can check the RX signal waveform within the RX bandwidth, as well as the TX wave form.

EXPLANATION OF THE FUNCTION KEYS ON THE AUDIO SCOPE AND OSCILLOSCOPE SCREEN

Here are the uses for the function keys when the Audio scope and Oscilloscope are displayed on the screen.



① [F2](MODE)

The SCAN MODE for the left-side Audio Scope can be changed. By pressing this key, the mode changes as shown below.

NORMAL → WF-1 → WF-2 → NORMAL

WF-1 and WF-2 are “Waterfall” displays. The sweep time (speed) of WF-2 is faster than that of WF-1.

② [F3](SOURCE)

Pressing this key lets you select the source for the audio to be viewed by the Audio Scope. The selections are:

VFO-A → VFO-B → EXT → VFO-A

When EXT is selected, you can observe the audio wave form of a signal provided by equipment connected to the **AUDIO IN** jack on the rear panel of the transceiver.

③ [F4](ATT) “Attenuator”

This key lets you adjust the attenuator for the Audio scope. Set the appropriate value based on the received signal.

0 dB → 10 dB → 20 dB → 0 dB

④ [F6](LEVEL)

This key lets you adjust the sensitivity of the Oscilloscope display at the right side of the screen. Adjust the level while viewing the screen, to optimize the setting for the lighting conditions in your station. Available values are:

0.3 V → 0.1 V → 1.0 V → 0.3 V

⑤ [F7](SWEEP)

This key lets you adjust the sweep time for the Oscilloscope. Adjust this setting while viewing the screen. Available sweep times are:

10 ms → 30 ms → 100 ms →

300 ms → 1 s → 10 ms

⑥ [DISP](DISPLAY)

Press this key to switch the TFT monitor to the “Log Book” screen.

Press and hold in this key top switch the TFT to the “SPECTRUM SCOPE” screen.

AUDIO SCOPE AND OSCILLOSCOPE

USING THE AUDIO SCOPE

The Audio Scope is particularly useful when making adjustments to the transmitter, especially when setting up the Speech Processor as well as the Parametric Microphone Equalizer.

On receive, you can observe the signal characteristics and quality of the incoming signal, as well. In the case of the Waterfall display, this can be used for precise frequency alignment of incoming signals to correspond with filters used in your computer's sound card or modem. The sweep time (speed) of WF-2 is faster than WF-1, and you can choose the sweep most appropriate for your operating application.

1. By pressing the [F2](MODE) key, the Waterfall mode can be modified. The available selections are:

NORMAL → *WF-1* → *WF-2* → *NORMAL*

NORMAL is a regular spectrum display.

WF-1 and *WF-2* are Waterfall displays, with *WF-2* utilizing a faster sweep time than the *WF-1* selection.

2. Pressing the [F3](SOURCE) key lets you select the source for the audio to be viewed by the Audio Scope. The selections are:

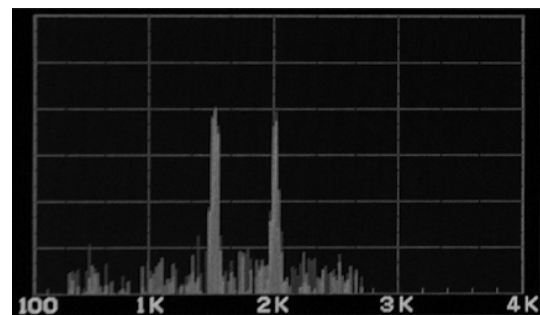
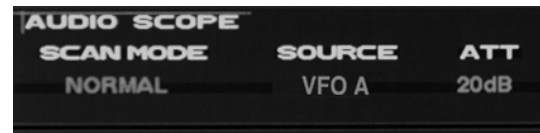
VFO-A → *VFO-B* → *EXT* → *VFO-A*

Advice: When *EXT* is selected, you can observe the audio wave form of a signal provided by equipment connected to the **AUDIO IN** jack on the rear panel of the transceiver.

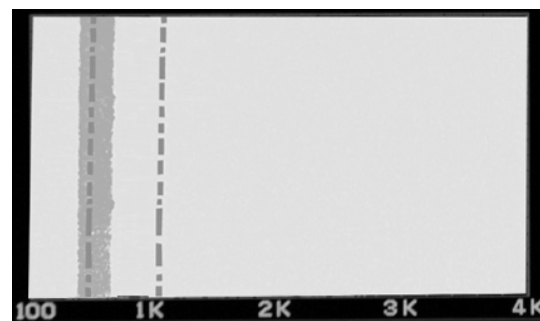
3. Press the [F4](ATT) key to change the setting for the attenuator. The available settings are:

0.3 V → *0.1 V* → *1.0 V* → *0.3 V*

Advice: By using this feature, you can conveniently monitor the status of the **CONTOUR** filter, the performance of the **IF Notch**, and the **WIDTH/SHIFT** status.



SPECTRUM DISPLAY



WATERFALL DISPLAY

AUDIO SCOPE SPECIFICATIONS

- Frequency Range:** 100 Hz - 4 kHz
- Frequency Resolution:** 20 Hz (Approx.)
- Display Range:** 80dB (Approx.)
- Signal Processing:** FFT (Fast Fourier Transformation)
- Input Level:** 1 Vp-p Input (ADC Max. value)
- Attenuator:** @0 dB, top edge;
@10 dB, 1 division of shift;
@20 dB, 2 divisions of shift

AUDIO SCOPE AND OSCILLOSCOPE

USING THE OSCILLOSCOPE

Both TX and RX waveforms can be observed, allowing optimal adjustments of setup options or filter settings, on Voice, CW, and Digital modes.

1. Press the [F6](LEVEL) key to set the level as appropriate for the signal strength being monitored.

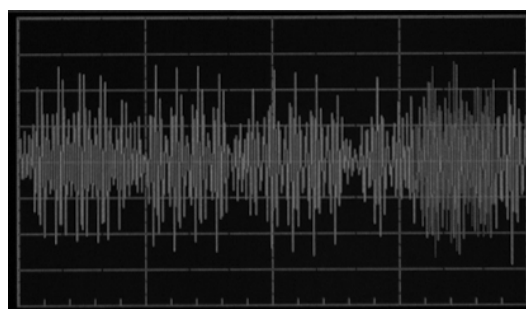
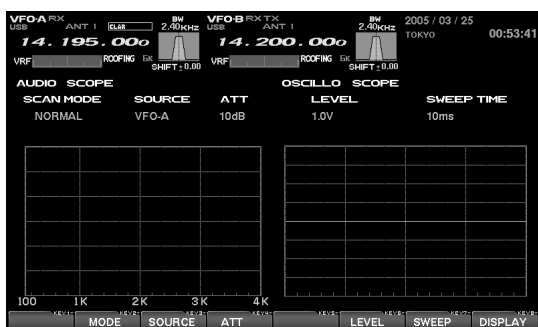
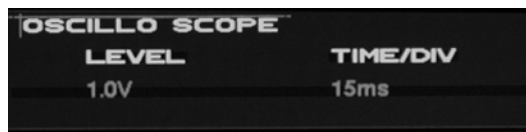
Available values are:

0.3 V → 0.1 V → 1.0 V → 0.3 V

2. Press the [F7](SWEEP) key to set the desired sweep time. Available values are:

10 ms → 30 ms → 100 ms →

300 ms → 1 s → 10 ms



Advice: When monitor the TX waveform, turn on the monitor feature by pressing the front panels [MONI] key.

OSCILLOSCOPE SPECIFICATIONS

Frequency Range: 0 - 4 kHz

Sweep Speed: 10/30/100/300/1000ms (adjustable)

Time Base Indication: One frame: 10 divisions (20 gradations) "Sweep time / 20"
500 μ /1.5 m/5 m/15 m/50 m/DIV

Signal Processing: AC Level Detection Synchronizer function

Input Level: 1 V_{p-p} Input (ADC Max. value)

AUDIO SCOPE AND OSCILLOSCOPE

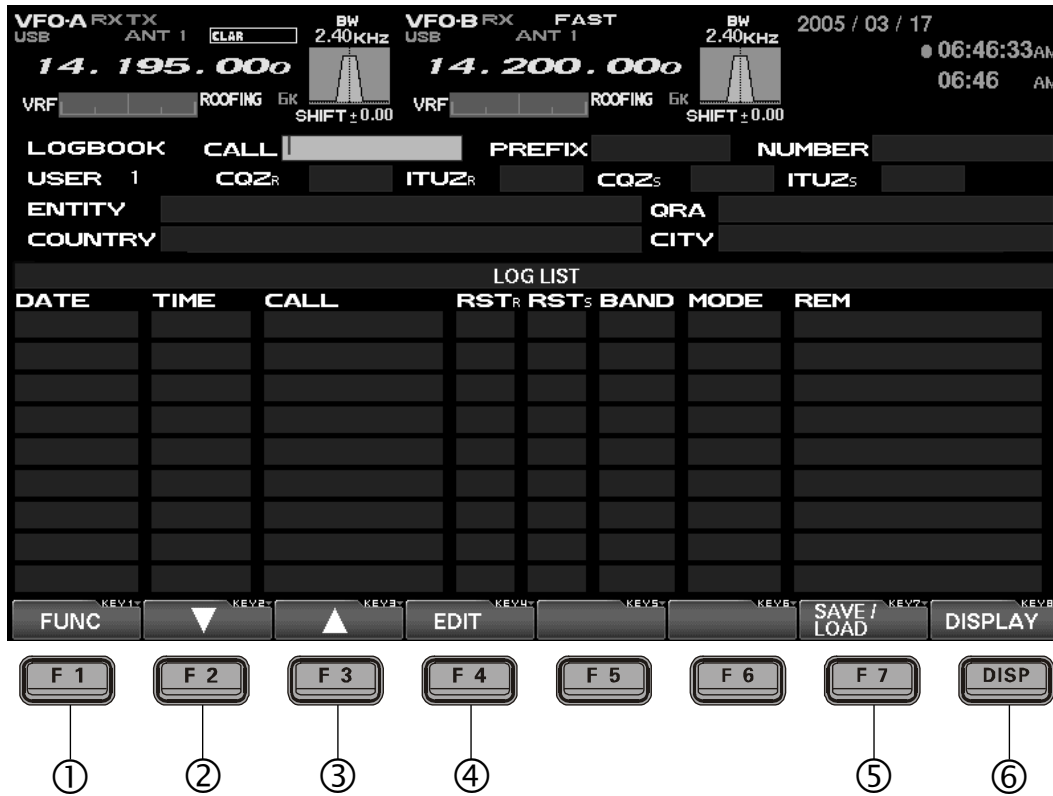
NOTE

LOG BOOK FUNCTION

ABOUT THE LOG BOOK

By connecting your keyboard (not supplied) to the transceiver's rear-panel **KEYBOARD** jack (PS/2 or USB), you can create a Log Book within the radio, and display it on the TFT. Date, time, frequency, and mode will be automatically stored, and you can save log data to the Compact Flash card for archive purposes.

EXPLANATION OF THE FUNCTION KEYS ON THE LOG BOOK SCREEN



① [F1](FUNC)

You may use the "CHECK" function to check the log to see if a QSO has been made previously with the logged station, and you may also create a summary of QSOs by band and mode by pressing this key. The log may be viewed solely for the current operator, or for all operators registered into the Logbook and saved on the CF card.

② [F2](▼)

Press this key to shift to the log line below the current one.

③ [F3](▲)

Press this key to shift to the log line above the current one.

④ [F4](EDIT)

Press this key to enable editing of previously-stored log data.

⑤ [F7](SAVE/LOAD)

Press this key to engage the screen that allows you to manage log data to be saved.

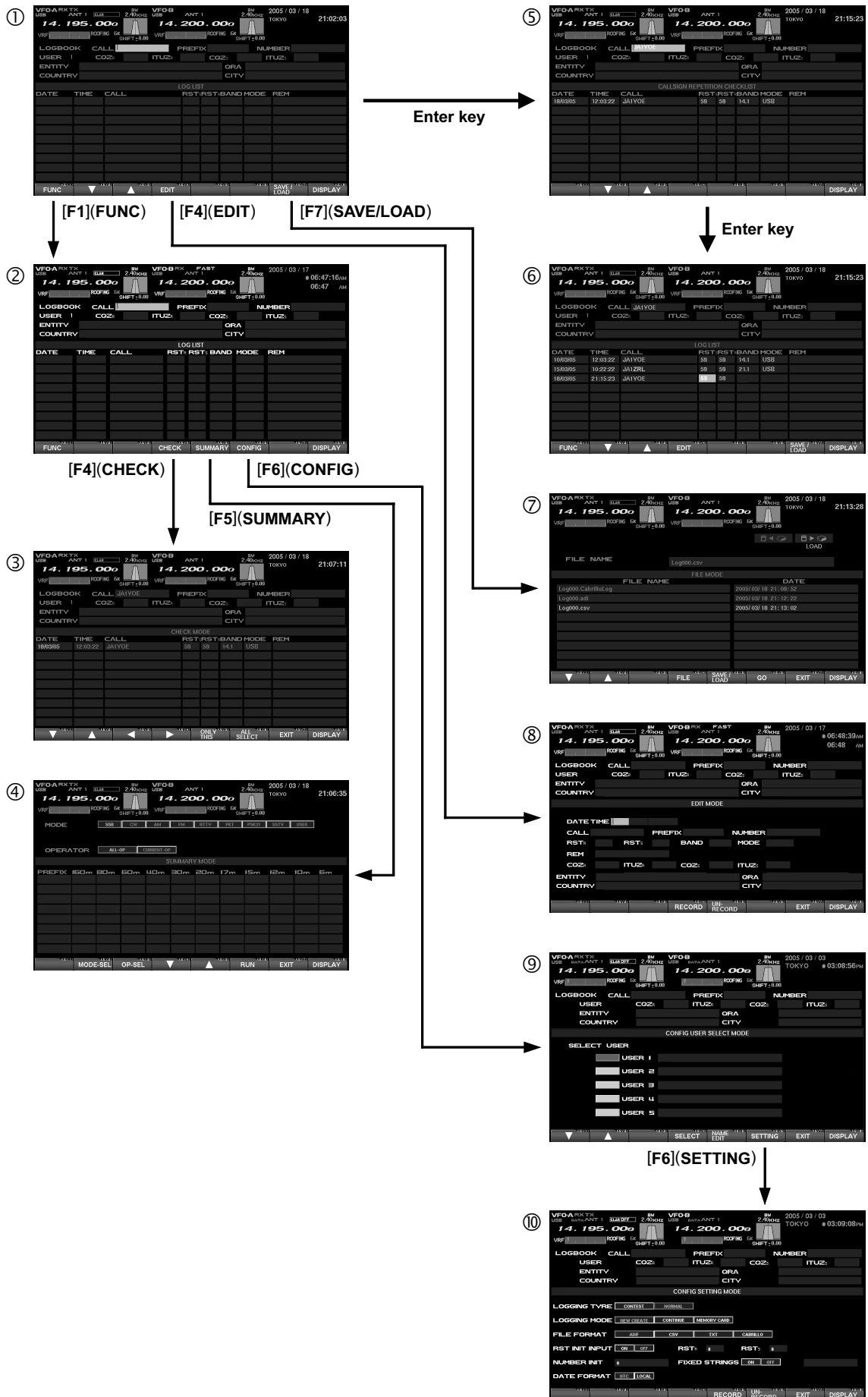
⑥ [DISP](DISPLAY)

Press this key momentarily to move to the "TEMPERATURE/SWR INDICATION" screen.

Press this key for 2 seconds to move to the "AUDIO SCOPE/OSCILLOSCOPE" screen.

LOG BOOK FUNCTION

LOG BOOK EXAMPLE



LOG BOOK FUNCTION

CONFIG SETTING

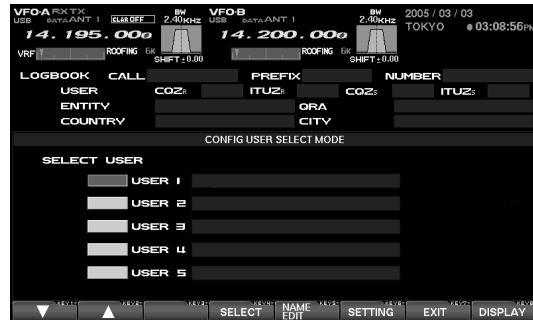
Up to five users may be registered into the Logbook. For use in a contest or otherwise, the settings for each operator may be stored for later recall when that operator signs on. The operator's identification may be entered into the NAME column; both the name and callsign may be entered..

1. Referring to Figure 2 on page 23, press the [F6](CONFIG) key, then the [F1](▼) / [F2](▲) keys to utilize the "SELECT USER" function.
2. When you want to register a new user, or change the name of an existing user, press the [F5](NAME EDIT) key and input the call sign and/or other information.
3. Press the [F5](NAME EDIT) key.
4. Press the [F6](CONFIG) key to engage the "CONFIG SETTING" mode, then use the keyboard's arrow keys to navigate to the needed fields.

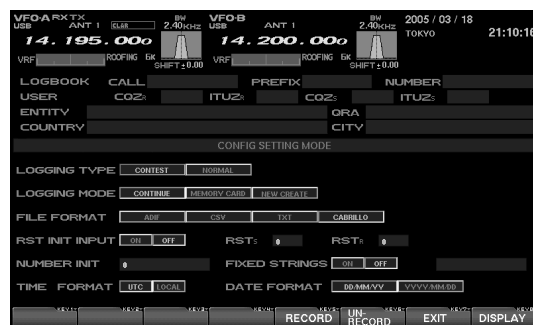
Please see the discussion below for details of the "CONFIG SETTING" mode.

5. Press the [F5](RECORD) key to register. If you want to un-do the registration, press [F6](UN-RECORD) key.

Advice: If no special entry is performed, the log will register you as "USER1."



"User Select" Mode



"User Edit" Mode

CONFIG SETTING

CONFING SETTING MODE SETUP

LOGGING TYPE (Setup of Log preferences)

CONTEST: This is a concise log format, with Callsign, RST, REM (Remarks) only being entered by the operator; the Date, Time, Band, and Mode will automatically be entered and saved.

NORMAL: Besides the above information from the Contest log format, you can enter the Country, City, Name, and other data.

In addition to the call sign, RST and REM, COUNTRY, CITY QRA, etc data can be added. All of the DATE, TIME, CBAND, CMODE are automatically saved; once again, the Date, Time, Band, and Mode will automatically be entered and saved.

LOGGING MODE (Logging Operational Mode)

NEW CREATE: Create a new Log Book.

CONTINUE: Add data to current log book.

MEMORY CARD: Download (read) log data from the CF card when turn on the rear panels main power switch (see page 27 for details).

FILE FORMAT (Set up the file format for the log data)

ADIF: A worldwide standard format for DX contest log data.

CSV: Comma Separated Values format.

TXT: Text format.

CABRILLO: Worldwide standard format used for electronic submissions of Contest logs.

RST INIT INPUT (RST Automatic Input)

ON: Automatic filling in of the RSTR and RSTS (RST Received/Sent) reports is enabled. Manual correction of individual log lines is, of course, possible.

OFF: On CW mode, "599" will be automatically entered, and on other modes "59" will be automatically entered. You may correct these reports manually via the keyboard.

NUMBER INIT (Setting the Initial Sequential Number)

The initial Contest Number (or other sequential number to be assigned to each QSO) is entered here. The automatic entry and transmission of the Contest Number will dramatically reduce fatigue over many hours of operation.

FIXED STRINGS (Contest Number/Multiplier Memo On/Off Setup)

ON: In a CW contest, this is the area used for enabling input of multiple "memo" columns of data that will be sent automatically, thus reducing fatigue.

OFF: If there is not need for multiple "memo" input columns, set this to Off.

TIME FORMAT (Conversion of UTC or Local Time for Logbook Time)

When log entry is done in LOCAL (LOCAL TIME-1), the log will automatically convert the time to UTC.

DATE FORMAT (Setup of Date Format to be day/month/year or year/month/day)

The Logbook can be set up for two different formats. When set to DD/MM/YY, March 28, 2005 will be formatted as 28/03/05. If the format selected is YYYY/MM/DD, the same date will be formatted as 2005/03/28.

LOG BOOK FUNCTION

LOG BOOK DATA INPUT

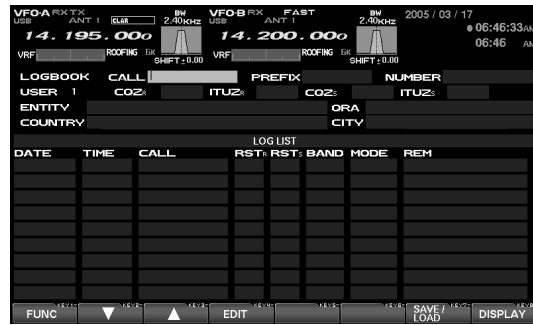
Log data may be entered by the user. Depending on the user setup (CONFIG) for "LOGGING TYPE," there are two logging modes: In the CONTEST mode, the operator just enters the callsign, signal report, and the REM ("remarks") fields, and the Date/Time/Band/Mode are all entered automatically. In the NORMAL mode, additional information may be entered, such as the Country, City, and Name. Up to 500 stations may store into a file.

Please enter the log data in accordance with the example in the illustration.

Advice: Before you start logging, we recommend that you perform the CONFIG SETTING MODE procedure within the User setup (CONFIG) protocol.

1. Referring to the Figure 2 on page 23, use your keyboard to enter the callsign in the CALL field. Now press [ENTER].
2. The callsign will be checked against the previous entries to see if it is a duplicate; if so, the "CALLSIGN REPETITION CHECKLIST" will open, listing this and any other duplicates. During the QSO, if you wish to delete the callsign and other information for this line, just press [ESC].
3. Enter all desired data in accordance with the example in the picture. When finished, push [ENTER] on the keyboard.

Note: In order to ensure preservation of log data, be sure to Save the data frequently. It is always a good idea to maintain a paper archive copy of log data. Vertex Standard specifically disclaims responsibility for any liability arising from the loss of log data.



"ENTRY" MODE

Advice: When entering the Zone via the ITUZR field, pressing the [ENTER] key will move you to the CQ Zone (CQZR); from there, use the [▶] key to navigate back to the ITUZR field, if desired.

When doing input of the PREFIX, CQZR (or ITUZR), ENTITY, and QRA data, please set the "LOGGING TYPE" to "NORMAL" beforehand. This will allow you to move from column to column by pressing the [ENTER] key. In addition, when (for example) entering the PREFIX and pressing [ENTER], the PREFIX SELECT LIST will appear, and the ENTITY, CQZR (or ITUZR), and COUNTRY will automatically be entered.

LOG BOOK PREVIOUS-QSO CHECK (CHECK)

It is possible to check the log in search for previous QSOs with a particular station. When a log entry of interest is found, you may edit the information on that line, if you like.

1. Referring to the Figure 2 on page 23, enter the desired callsign into the CALL field.
2. Press the [F4](CHECK) key to show a list of any previous QSOs with the specified station within the current log. Any previous QSOs will appear on a CHECK MODE list.
3. Use the [F1](▼), [F2](▲), [F3](◀), and [F4](▶) keys to scroll through the data on the CHECK MODE list.



"PREVIOUS-QSO CHECK" MODE

Quick Point: In the Step 2, before doing a check for a duplicate QSO, a copy is made of the QSO record, and you may then do editing of that record. Use the [F1](▼), [F2](▲), [F3](◀), and [F4](▶) keys to select an item from among CALL, RST, BAND, MODE and REM; when you press [F5](ONLY THIS), you'll copy only that item. When you press [F7](EXIT), the TFT image changes to what you see on page ??; press [ENTER] on the keyboard to do a duplicate check, and press [ENTER] once more to return to the log input page and copy the data.

If you select a line of data using the [F1](▼) and [F2](▲) keys, pressing [F6](ALL SELECT) followed by [F7](ENTER) will cause the TFT image to change to what you see on page ??, and you may now press the [ENTER] key on the keyboard to do a duplicate check. Press [ENTER] once more to return to the log input page and copy the data to that page (however, the NUMBER, RST, BAND, and MODE data will not be copied).

EDITING LOG BOOK ENTRIES

Previously-entered log data may be edited alter, if desired.

1. Referring to Figure 1 on page 23, press the [F1](▼)/[F2](▲) key to select the log data to be Editing.
2. Now you may use the arrow keys on your keyboard to move the highlighted area through the log.
3. Use the keyboard to change data within the currently-highlighted area.
4. Press the [F4](RECORD) key when you are finished editing the entries you have worked on. If you do not wish to save your changes, press the [F5](UN-RECORD) key instead.



"EDITING" MODE

Advice: Data may easily be deleted, if you make a mistake, enter duplicate data accidentally, etc.

To erase data, use steps (1) and (2) to select the data to be erased. Then press [ESC] on the keyboard; the data will be deleted. Press [F4] (RECORD) to return to the screen depicted on page ?? and end this procedure.

LOG BOOK FUNCTION

SAVING LOG DATA

Log data can be saved in the supplied Compact Flash (CF) card.

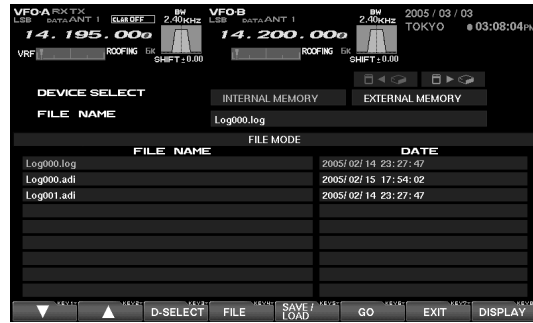
1. Referring to Figure 1 on page 23, press the [F7](SAVE/LOAD) key to move to the Save/Load page.
2. Press the [F5](SAVE) key to choose the "Save" protocol.



3. Input the desired FILE NAME, and press the [F6](GO) key to save the data in the CF card.

Note: When the ERROR message "PLEASE CHECK A DISK" is displayed at the right side of the MEM CARD indication, please confirm that the CF card is inserted correctly into its slot.

When memory data is saved in the CF card, any file with the same name as the current file will be revised (over-written), and the previous data will be deleted. Please note.



"SAVE/LOAD" MODE

Advice: The user configuration protocol (CONFIG) allows you to specify the file format that is used for saving log data. The available formats are:

- ADIF (International Log Format) **adi**
- CSV (Cursor-Limited Values) **csv**
- TXT (Tab-Limited Values) **txt**
- CABRILLO **cabrillolog** (International Log Format)

LOADING LOG DATA (LOAD)

You may load log data from a CF card into your FTdx9000D (for example, an archive copy, or a log from a different transceiver). Before starting, be sure the CF card containing the log data has been inserted into the CF Card Slot.

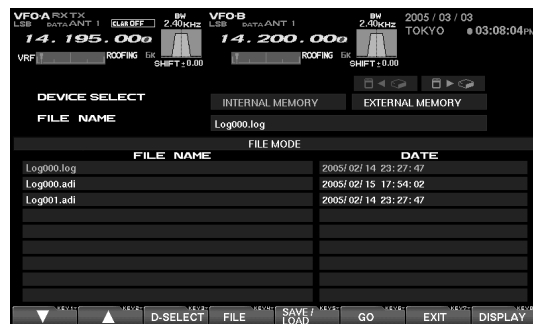
1. Referring to Figure 1 on page 23, press the [F7](LOAD) key to engage the Save/Load mode.
2. Press the [F5](SAVE/LOAD) key to engage the LOAD protocol.



3. Use the [F1](▼) and [F2](▲) keys to select the file you wish to upload to the transceiver, then press the [F6](GO) key to load the file.

Advice: When the ERROR message "PLEASE CHECK A DISK" is displayed at the right side of the MEM CARD indication, please confirm that the CF card is inserted correctly into its slot.

When memory data is loaded from the CF card, the current memories stored in the FTdx9000D will be over-written, and the previous data is erased. We recommend that you save and download the current memory data to the CF card, if you want to use it again later.



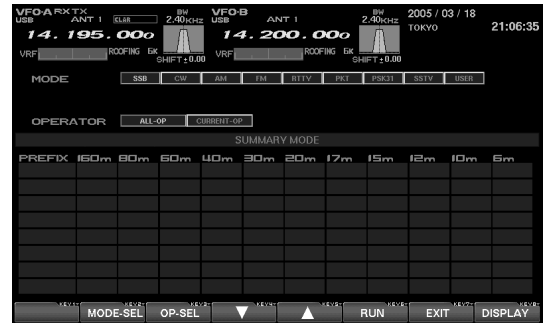
"SAVE/LOAD" MODE

SUMMARY CHECK

You may do a band-by band, mode-by mode, or “all log” summary of your log data.

MODE-BASED SUMMARY CHECK

1. Referring to Figure 2 on page 23, pressing [F5](SUMMARY) to brings up the Summary page, and you may then press [F2](MODE-SEL) and select the desired mode, using the keyboard’s arrow keys.
2. When you press [F5](RUN), the summary list for the selected mode will be displayed.
3. Use the [F1](▼) and [F2](▲) keys to scroll through the summary list.



“SUMMARY CHECK” MODE

OPERATOR-BASED SUMMARY CHECK

1. Referring to Figure 2 on page 23, press [F5](SUMMARY) to bring up the Summary page, then press [F3](OP-SEL) and then use the keyboard’s arrow keys to select “ALL-OP” or “CURRENT OP” as desired.
ALL-OP: All log data from all operators registered on the data stored on the CF card will be displayed.
CURRENT OP: Only the log data from the current operator will be displayed.
2. Press [F5](RUN) to display the summary list for the selected operator, or all operators..
3. Use the [F1](▼) and [F2](▲) keys to scroll through the summary list.

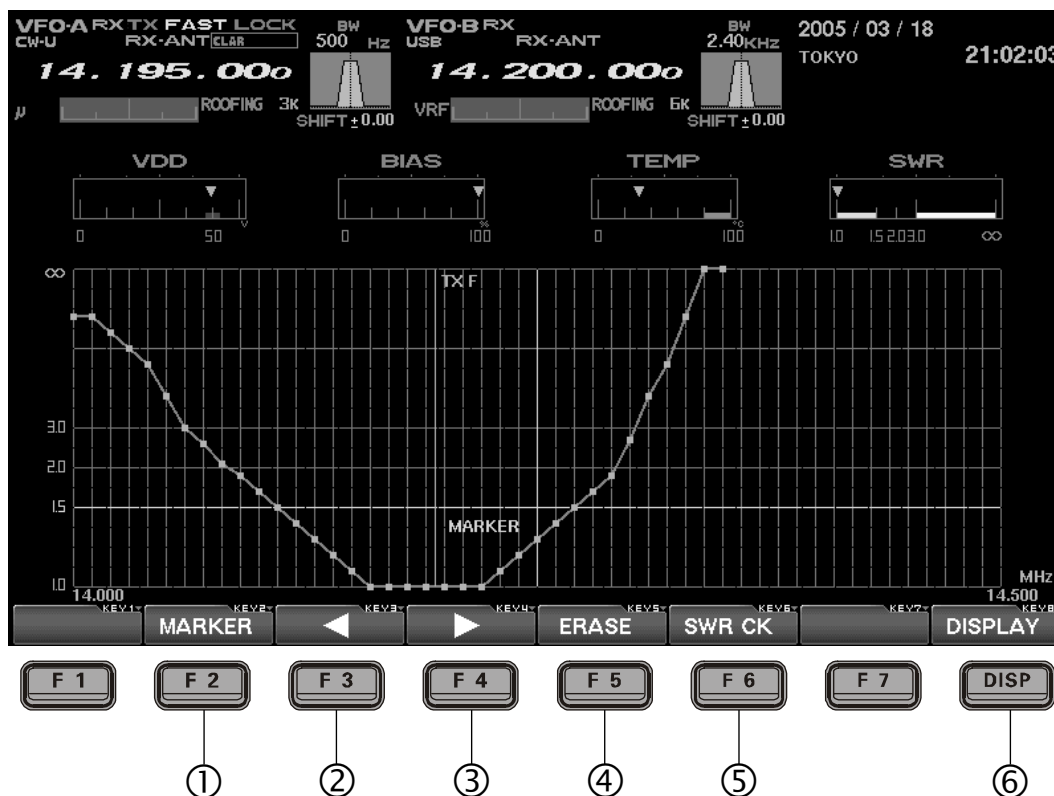
Note: The Summary Check function requires that “NORMAL” be selected as the “Log Type” before you start, and only logs containing the PREFIX may be used for this function.

TEMPERATURE / SWR INDICATION

ABOUT THE TEMPERATURE/SWR INDICATION

It is possible to display the VDD (TX Final Amplifier) voltage, bias voltage, the temperature of the heat sink of the final devices, and the (swept) SWR characteristics/performance of the antenna connected, all together on the TFT screen.

EXPLANATION OF THE FUNCTION KEYS ON THE TEMPERATURE/SWR INDICATION SCREEN



① [F2](MARKER)

This key turns the marker on the SWR characteristic graph on and off.

The marker lets you identify quickly the frequency on which a particular SWR reading is being observed.

② [F3](◀)

This key moves the marker cursor to the left.

③ [F4](▶)

This key moves the marker cursor to the right.

④ [F5](ERASE)

Press this key when you want to clear the measured SWR at the marker's current point.

⑤ [F6](SWR CK)

To check the SWR on a particular frequency, rotate the Main dial, and set the frequency to be measured. Now press [F6](SWR CK); the SWR will be measured and the result will be displayed on the screen.

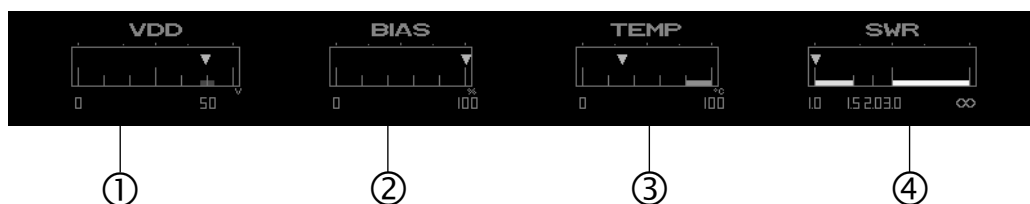
⑥ [DISP](DISPLAY)

Pressing this key momentarily takes you to the "GREAT CIRCLE MAP/ROTATOR CONTROL FUNCTION" screen.

If you press and hold in this key for 2 seconds, the screen will move to the "LOG Book" screen.

TEMPERATURE / SWR INDICATION

GRAPHIC METER DISPLAYS



① VDD

The drain voltage of the final FET is measured and displayed here. The measurement range is 0-60 V, and the proper voltage is around 50 V. On TX, if around 50 V is displayed, the transceiver is operating normally.

② BIAS

While operating with the Class-A, and the bias is changed by rotating the **BIAS** knob from class A to class AB, this indication can be used to observe the current setting. The indication is 0-100 % and “0%” means class AB, while “100%” means class A. Even if the Bias is varied, the RF output will not change (up to the 75 Watts of maximum power under class A), and you can change the bias safely even when you are using a linear amplifier.

③ TEMP

This indicates the temperature (measured) of the final amplifier FETs’ heat sink.

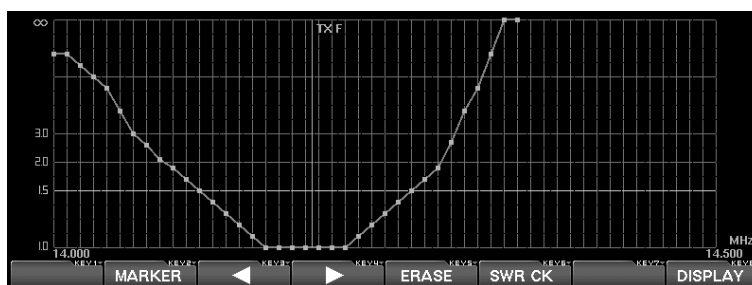
The measured temperature range of this meter is 0 - 100 °C, and above 80 °C is the “Red Zone” temperature range to be avoided, so as to ensure a safe operating temperature range. When the temperature rises above 80 °C, the fan speed will increase by a factor of four, providing a significant increase in air flow. The heat sink temperature may rise appreciably during Class-A operation, especially if the ambient temperature is warm, and we recommend that you monitor the temperature during Class-A transmission, adjusting the Bias control downward (more toward Class AB) if excessive heating is observed. A lower bias level will cause less heat to be dissipated, thus reducing the heat sink temperature.

④ SWR

This displays the SWR characteristic of the amateur band that you are currently using, with points along the graph indicating the frequencies that have been measured.

SWEPT SWR DISPLAY

It is possible to show the SWR characteristics and antenna performance on a graph by measuring the SWR at various points across an amateur band.



In order to measure the SWR of the antenna system correctly, please turn off the antenna tuner before measuring the SWR.

1. Please confirm that the RF output is over 10 Watts. In order to measure the SWR correctly, 10 Watts of RF output will be required. The TX RF output may be adjusted using the **RF PWR** knob.
2. Please confirm that the test transmission will not cause QRM to other stations (be sure to ask if the frequency is clear, and identify in accordance with regulations). Then press the **[F6](SWR CK)** key.
3. Perform the above procedure several times across the band, and the SWR measured at the various test frequencies will automatically be plotted on

the chart, creating a performance characteristic graph for the current frequency range.

Advice: For the purposes of plotting the SWR across the band, the resolution of the graph is every 10 kHz on the 1.8 ~ 24.9 MHz bands, and 100 kHz on the 28/50 MHz bands.

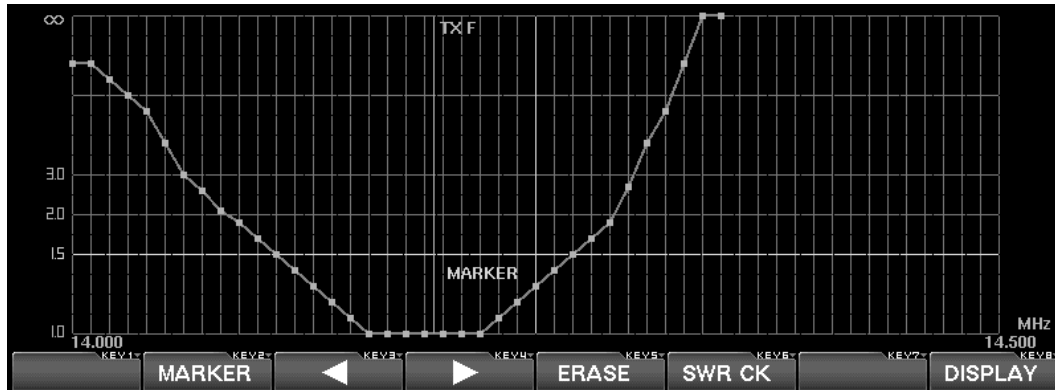
If a measurement is done on the same frequency as where a previous measurement was made, the old data will be cleared and the new measurement data will replace it.

Always observe proper operating courtesy to others, and check to be sure the frequency is clear before performing any SWR measurements.

TEMPERATURE / SWR INDICATION

USING THE MARKER ON THE SWR GRAPH

It is possible to read the measured SWR value by placing the marker onto the desired frequency (measurement test point) of the SWR graph.



1. Press the [F2](MARKER) key to turn the marker function on; the marker cursor will be displayed.
2. Use the [F3](◀) and [F4](▶) keys to move the marker line and select the desired frequency for which you want to read the previously-measured SWR.

Advice: Please use an antenna with the SWR below 1.5:1. If the SWR is over 1.5:1, the final protection circuit activates, and the RF output power may be reduced.

If the SWR is over 3.0 in the amateur band, there is a possibility that the coaxial cable or the antenna itself (antenna system) may have some problem. Please take the necessary corrective action so as to ensure optimum, safe performance in your station.

The antenna tuner in the radio can match the SWR between the transceiver and the antenna; however, keep in mind that this is not affecting the SWR at the antenna feedpoint itself. In cases of higher-than-desirable SWR, we recommend corrective action be taken at the antenna itself.

When you want to clear the measured SWR value at the marker test point, press the [F2](MARKER) key.

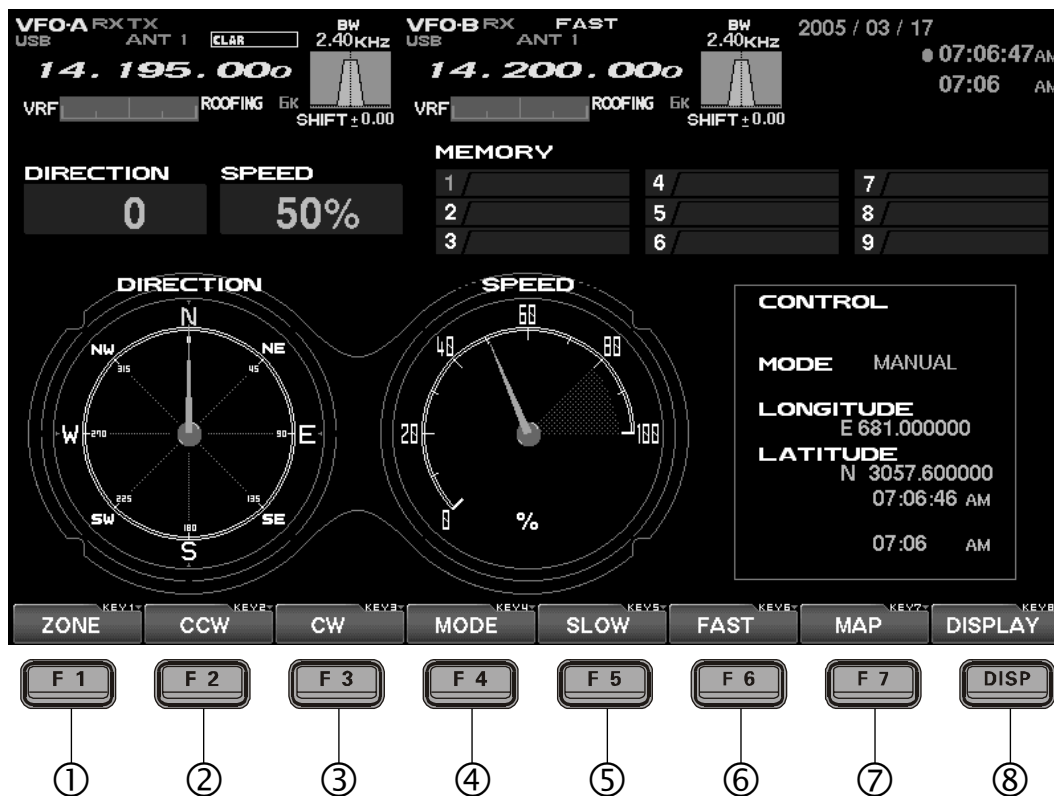
GREAT CIRCLE MAP / ROTATOR CONTROL FUNCTION

ABOUT THE GREAT CIRCLE MAP/ROTATOR CONTROL FUNCTION SCREEN

In order to direct the antenna to the desired/opposite station, a Great Circle Map can be displayed on the screen. This Great Circle map will show your location at the center of the map, and you can easily recognize and confirm the direction your antenna should be pointed to work a station elsewhere in the world.

In addition, when a Yaesu Rotator (**G-800DXA**, **G-1000DXA**, or **G-2800DXA**) is connected to this transceiver, the transceiver can control the direction of the rotation, rotation speed, etc. on the TFT screen. In this case, the rotator has to be connected to the **FTdx9000** using a special cable. For details, please contact WDXC.

EXPLANATION OF THE FUNCTION KEYS ON THE GREAT CIRCLE MAP/ROTATOR CONTROL SCREEN



① [F1](ZONE)

This key moves you to a screen used for input of the location of the other station. When the country name and the city name are entered, your location and the opposite station's will be connected with a line and displayed on the Great Circle map (short path only). The location of the other station can be set when Rotator control is in the manual mode.

Press the [F4](MODE) key as needed to select the manual mode. The mode is indicated in the middle of the TFT display.

② [F2](CCW)

When a Yaesu Rotator (**G-800DXA**, **G-1000DXA**, or **G-2800DXA**) is connected to the transceiver, and you press this key, you can rotate the antenna in the CCW (counter clockwise) direction.

③ [F3](CW)

When a Yaesu Rotator (**G-800DXA**, **G-1000DXA**, or **G-2800DXA**) is connected to the transceiver, and you press this key, you can rotate the antenna in the CW (clockwise) direction.

GREAT CIRCLE MAP / ROTATOR CONTROL FUNCTION

EXPLANATION OF THE FUNCTION KEYS ON THE GREAT CIRCLE MAP/ROTATOR CONTROL SCREEN

④ [F4](MODE)

By pressing this key, the rotation control mode can be selected. With every momentary press, the mode changes as shown below. The mode is indicated in the middle of the TFT display.

MANUAL → PRESET → MEMORY → MANUAL

MANUAL: CW/CCW control is performed manually.

PRESET: Rotation to the "PRESET" direction is selected.

MEMORY: Rotation to one of the stored rotation memories is selected.



MODE Indicator

⑤ [F5](SLOW)

When you want to slow down the speed of the rotation, this key is used. Normally, you will use the "100 %" value; once 100 % is selected, you typically will not need to use this key.

⑥ [F6](FAST)

When you want to increase the speed of the rotation, this key is used. Normally, you will use the "100 %" value; once 100 % is selected, you typically will not need to use this key.

⑦ [F7](MAP)

This key switches the TFT between the Great Circle Map and the regular Rotator Control compass display.

Advice: If the Great Circle display is utilized, you probably already know the approximate location of the other station on the map; so even if the country name and the city name are not entered into the radio, the Great Circle map provides a convenient tool for rotating the antenna to the optimum heading.

If your own location is not indicated at the center of the Great Circle Map, please set the local time (which registers the location where the radio is operated). If this is not done, the various functions of the World clock and Great Circle map will not function correctly. Regarding the setting of the Local time, please see the "PLEASE READ THIS FIRST" document.

⑧ [DISP](DISPLAY)

Press this key to move to the "MEMORY CHANNEL List" screen.

Press and hold in this key for two seconds to revert to the "TEMPERATURE/SWR INDICATION" screen.



"GREAT CIRCLE MAP" DISPLAY

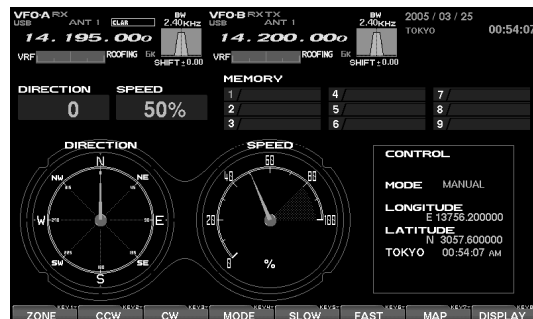
GREAT CIRCLE MAP / ROTATOR CONTROL FUNCTION

MANUAL MODE

It is possible to operate/control the rotator manually. If the other station's location has been entered, the location of the other station and yours will be connected with a line on the Great Circle Map, and you can rotate the antenna manually to the direction of the other station.

MANUAL OPERATION

Use the [F2](CCW) key to rotate the antenna counterclockwise, or the [F3](CW) key to cause clockwise rotation of your antenna.



"REGULAR COMPASS" DISPLAY

MANUAL OPERATION

1. Press the [F4](MODE) key, as necessary, to select the "PRESET" or "MANUAL" mode. The mode is indicated in the middle of the TFT display.
2. Press the [F7](MAP) key to display the Great Circle Map on the screen. If you know the approximate location of the country of the other station, rotate your antenna by looking the map and rotating the antenna in the appropriate direction.
3. If you want to display a station on the Great Circle Map, start by pressing the [F1](ZONE) key; the World Map's zones will be displayed. Select the Zone of the other station by pressing the [F1](▼), [F2](▲), [F3](◀), and [F4](▶) keys, then press the [F7](SELECT) key momentarily. The list of the countries in the selected Zone will be shown. Select the country name of the other station by

pressing the [F1](▼), [F2](▲), [F3](◀), and [F4](▶) keys, then press the [F7](SELECT) key momentarily.

Now, the list of the city names within the selected country will appear, and you will need to select one of the city names by pressing [F1](▼), [F2](▲), [F3](◀), and [F4](▶) keys. Now press the [F7](SELECT) key.

Note; in some countries, there may be only one city in the country; select that one city anyway.

4. Automatically the screen will revert to the Great Circle Map, and the location of the other station will plotted on the map, connected by a line to your location via the short path.
5. Use the [F2](CCW) and [F3](CW) keys to rotate your antenna system to the direction just plotted on the TFT.



"GREAT CIRCLE MAP" DISPLAY

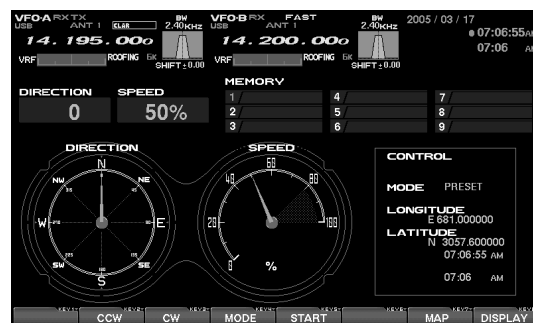
GREAT CIRCLE MAP / ROTATOR CONTROL FUNCTION

PRESET MODE

The Preset mode lets you set the desired direction of the rotator in advance, so you can automatically rotate your Yaesu rotator to the designated direction. Use of a Yaesu Rotator (**G-800DXA**, **G-1000DXA**, or **G-2800DXA**) requires the connection of the rotator cable to the connector located on the back of the transceiver.

1. Press the **[F4](MODE)** key, as necessary, to select the **"PRESET"** mode.
2. Press the **[F7](MAP)** key, if necessary, to bring up the Great Circle map screen.
3. Press the **[F2](CCW)** or **[F3](CW)** key to set the Preset pointer to the direction of the other station's location.
4. Press the **[F5](START)** key to engage hands-free rotation to the beam heading you just set up in the previous step.

You may stop the manually by pressing the **[F5](START)** key again.



"REGULAR COMPASS" DISPLAY



"GREAT CIRCLE MAP" DISPLAY

GREAT CIRCLE MAP / ROTATOR CONTROL FUNCTION

MEMORY MODE

It is possible to rotate the antenna automatically to a direction or directions which you store into memory in advance. Use of a Yaesu Rotator (G-800DXA, G-1000DXA, or G-2800DXA) requires the connection of the rotator cable to the connector located on the back of the transceiver.

PROGRAMMING BEAM HEADINGS INTO MEMORY

1. Press the [F4](MODE) key, as necessary, to select the "PRESET" or "MANUAL" mode.
2. Use the techniques learned previously to rotate the antenna to the desired beam heading.
3. Now press the [F4](MODE) key to select the MEMORY mode.
4. Select the desired memory channel register by using the the [F2](▼) key and [F3](▲) keys, then press the [F6](MW) key to memorize the programmed beam heading.

Advice: The maximum number of beam-heading memories which can be stored is 9.

If you have connected your after-market keyboard to the transceiver, you can append a name (tag) to the memory channel (maximum: 6 characters). It often is convenient to enter the callsign of a station, or perhaps a label such as "Europe" for easy reference. The method of entering the name tag into a memory is described below.

1. Use the [F2](▼) key and [F3](▲) keys to select the rotator memory register onto which you wish to append a name tag.
2. Press [ENTER] on your keyboard; the cursor on the screen will blink.
3. Use your keyboard to enter the name tag; a maximum of six characters may be utilized.

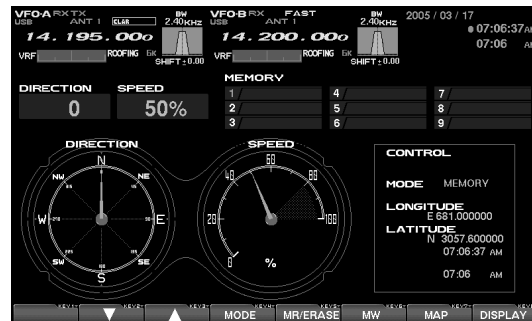
MEMORY RECALL

1. Use the [F2](▼) key and [F3](▲) keys to select the desired location from the rotator memory list.
2. When you momentarily press the [F5](MR/ERASE) key, the rotator will turn to the direction (beam heading) that has been memorized.

ERASING MEMORY

1. Use the [F2](▼) key and [F3](▲) keys to select the rotator memory you wish to erase.
2. Press the [F5](MR/ERASE) key for 2 seconds to erase the memory's data.

Note: Once erased, memory data cannot be restored!



"REGULAR COMPASS" DISPLAY



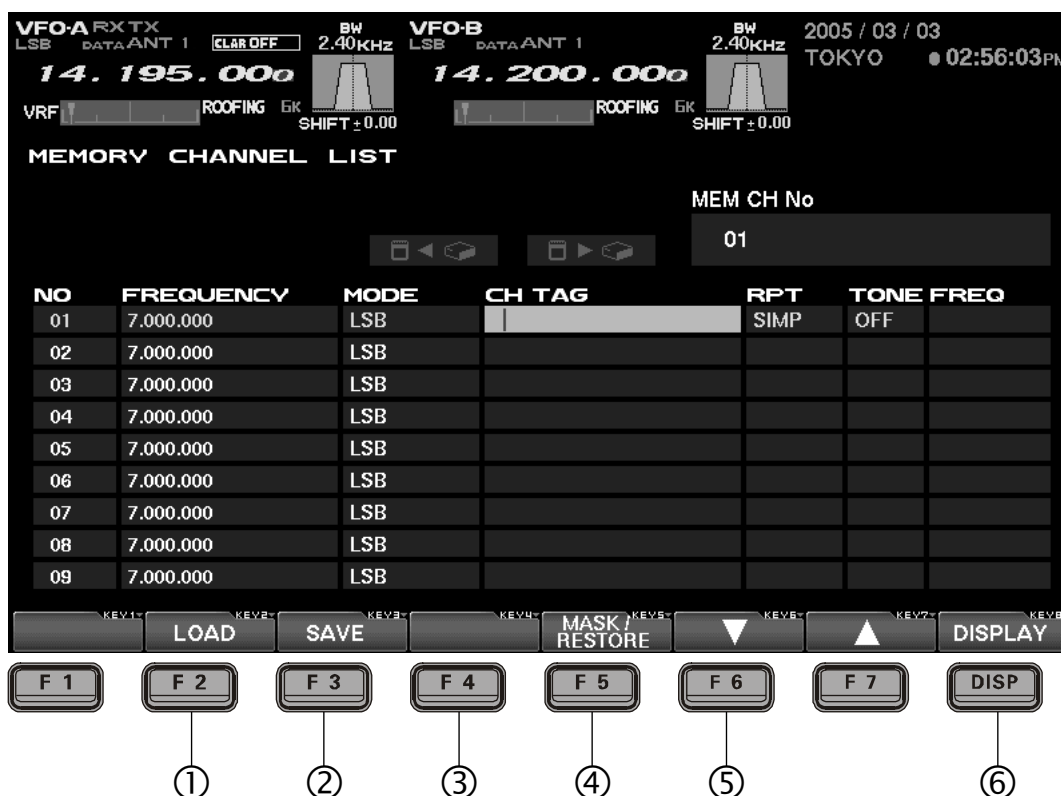
"GREAT CIRCLE MAP" DISPLAY

USING THE MEMORY CHANNEL LIST

ABOUT THE MEMORY CHANNEL LIST

This is the screen which displays the transceiver's memory channels. On the list, the channel number, ID tag, frequency, and operating mode are shown. The FTdx9000 has an extensive memory system of 99 channels that may be arrayed into up to six groups, and you can check the entire memory system's status by viewing this screen.

EXPLANATION OF THE FUNCTION KEYS ON THE MEMORY CHANNEL LIST SCREEN



① [F2](LOAD)

Press this key to load memory data previously saved on the CF card to the transceiver.

② [F3](SAVE)

Press this key to save the current memory data to the CF card.

③ [F5](MASK/RESTROKE)

It is possible to erase the currently-selected memory channel's data by pressing this key. If you want to restore the erased memory data, press this key again after erasing the memory.

④ [F6](▼)

Use this key to move the highlighted field on the memory list downward.

⑤ [F7](▲)

Use this key to move the highlighted field on the memory list upward.

⑥ [DISP](DISPLAY)

Press this key momentarily to move to the World Clock page.

Press and hold this key in for two seconds to revert to the Rotator Control page.

USING THE MEMORY CHANNEL LIST

ERASING A MEMORY CHANNEL/RESTORING AN ERASED MEMORY CHANNEL

You can erase data from any memory channel which is no longer needed. It also is possible to restore (immediately after deletion) erased memory channel data, in case you erase something by accident.

1. Select the memory channel you want to erase by pressing the [F6](▼) key or [F7](▲) key.
2. To mask the current memory's contents, press the [F5](MASK/RESTORE) key. If you want to restore the erased memory channel's data, press the [F5](MASK/RESTORE) key once more.

Advice: Memory channel which has been erased can be restored by pressing the [F5](MASK/RESTORE) key again, but if any other key has been pressed after you erased the memory channel, the memory cannot be restored.



Press [F5](MASK/RESTORE)

SAVING MEMORY DATA

Memory data from the FTdx9000D's internal memory may be saved to the supplied Compact Flash (CF) card.

1. Press the [F3](SAVE) key to open the Save window. If there are several file names stored, select the desired file by pressing the [F6](▼) key and [F7](▲) keys.



2. If you want to over-write the file name, go to step 3. If you do not want to over-write the data on an existing file name, and want to save the data in the new file. Press the [F4](FILE) key; now enter the desired file name from your keyboard (the file extension will be ".mcl" for Menu data).
3. Press the [F3](GO) key to save the data into the CF card. If you want to cancel the saving of the memory data, press the [F2](CANCEL) key.

Advice: When the ERROR message "PLEASE CHECK A DISK" appears on the right side of the MEM CARD notation, please confirm that the CF card is inserted correctly into its slot.

When memory data is saved in the CF card under a previously-used file name, the old/previous data will be revised and the old data erased.



Press [F3](SAVE)



Press [F3](GO)

USING THE MEMORY CHANNEL LIST

LOADING MEMORY DATA

Loading Memory Data from the CF Card to the Memory on the FTdx9000.

1. Press the [F2](LOAD) key to open the memory loading window.

If there are multiple file names stored on the CF card, select the desired file by pressing the [F6](▼) key or [F7](▲) key.



2. Press the [F3](GO) key to commence loading of the memory data to the transceiver. If you wish to cancel the download, press the [F2](CANCEL) key.

Advice: When the ERROR message “PLEASE CHECK A DISK” appears on the right side of the MEM CARD notation, please confirm that the CF card is inserted correctly into its slot.

When the memory data is loaded from the CF card to the memory on the FTdx9000, all previous data will be over-written and the old data will be erased. Please remember to save the current memory contents to the CF card, if you want to retrieve it later.



↑
Press [F2](LOAD)



↑
Press [F3](GO)

USING THE MENU MODE

ABOUT THE MENU MODE

The **FTDx9000**'s Menu mode includes 161 different settings, used for configuration of various transceiver features and functions that generally are set once, and then seldom changed.

Advice: The 161 items in the menu are grouped into 11 categories, and the groups are displayed at the left top of the menu list screen. It will be most convenient for you if you initially select the group, by rotating the Main Dial, and then select the individual menu item you want to work on.

GROUP NAMES IN THE MENU

AGC

This group is used for the setting up the AGC timing parameters. The AGC characteristics can significantly affect the performance of the receiver, and we recommend that you not change the settings in normal use. If the setting gets changed by accident, please do the menu mode reset described at the right.

DISPLAY

This is the display-related group, related to the Dimmer, TFT color, clarifier display, etc.

FH-2

This is the group relating to the FH-2 keypad setup.

GENERAL

This group covers miscellaneous items which are not included in other groups.

MODE-AM, MODE-CW, MODE-DATA, MODE-DM, MODE-PKT, MODE-RTTY, MODE-SSB

These are the groups related to items associated with different operating modes, and which may be configured separately.

RX AUDIO

This is the group related to the setting of the headphones and internal speakers.

RX DSP

This group pertains to the settings for the RX filter bandwidth, as well as other receiver filter configurations.

SCOPE

This group is used to set the starting frequency for the Spectrum scope on the FIX mode (band by band).

TUNING

This is the Dial step configuration group.

TX AUDIO

This group is used for setup of the parametric equalizer.

TX GENERAL

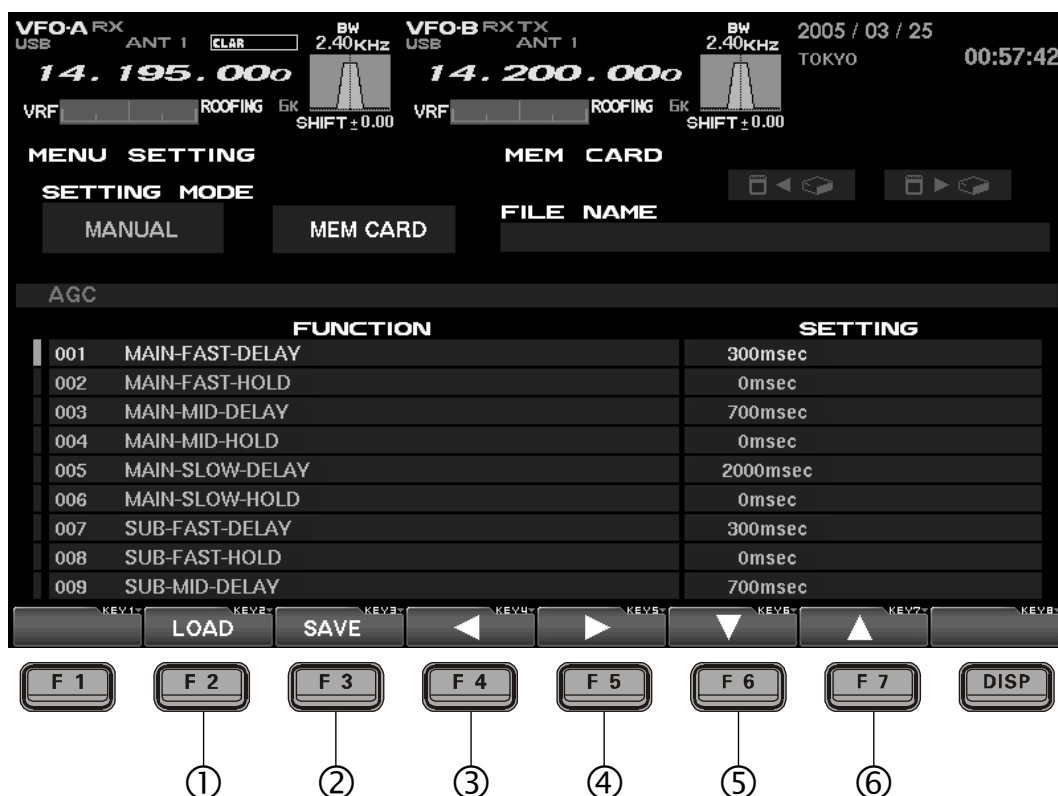
This group is used for setting the TX RF output, configuration of linear amplifier switching, full-duplex operation, etc.

MENU MODE RESET

1. First turn off the radio by pressing the front panel **[POWER]** switch.
2. Now, turn on the radio while pressing the **[MNU]** key. The menu mode will be reset, and the factory default configurations will come back.

USING THE MENU MODE

EXPLANATION OF THE FUNCTION KEYS ON THE MENU MODE SCREEN



① [F2](LOAD)

Press this key to download previously-used Menu settings from the CF card to the transceiver.

② [F3](SAVE)

Press this key to save the current Menu settings to the CF card.

③ [F4](◀)

Use this key to select the configuration value of the menu item. The value may also be changed by rotating the **CLAR/VFO-B** knob.

④ [F5](▶)

Use this key to select the configuration value of the menu item. The value may also be changed by rotating the **CLAR/VFO-B** knob.

⑤ [F6](▼)

This is the “down” key for scrolling through the menu mode list. The items also can be selected by rotating the Main Tuning knob.

⑥ [F7](▲)

This is the “up” key for scrolling through the menu mode list. The items also can be selected by rotating the Main Tuning knob.

When you have completed making all changes to the menu setting(s), **press the [MNU] key for 2 seconds to lock in the changes**. If you do not want to keep the changes, press the [MNU] key only momentarily; the radio will come back to the previous menu status that was present before you made the changes.

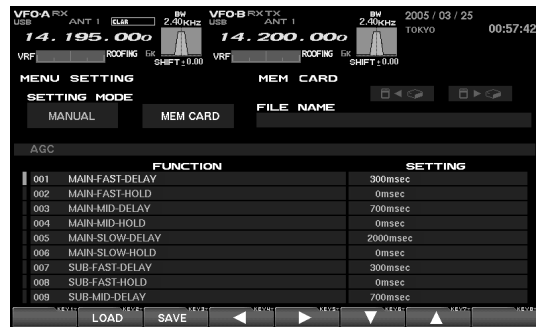
USING THE MENU MODE

MENU MODE CONFIGURATION CHANGES

When you want to change something in a menu mode setting, follow the procedure described below.

1. Press the [MNU] key momentarily.
The TFT will display the Menu page. Included on this page will be the Menu Group, Menu Item Name, Menu Item Number, and the current status (setting) for each Menu item.
2. Use the Main Tuning Dial, or the the [F6](▼)/[F7](▲) keys, to select the Menu item you wish to work on.
3. Use the CLAR/VFO-B knob, or the [F4](◀)/[5](▶) keys, to change the setting of the selected Menu item.
4. Press the [MNU] key is pressed for 2 seconds to save (within the transceiver) the new setting; the menu screen will close, and you will then return to the screen that was in use before entering the menu mode.

If you press the [MNU] key momentarily to exit, the new settings will not be saved, and you will exit from the menu mode without retaining the new configuration.



MENU MODE RESET

1. First turn off the radio by pressing the front panel [POWER] switch.
2. Now, turn on the radio while pressing the [MNU] key. The menu mode will be reset, and the factory default configurations will come back.

USING THE MENU MODE

SAVING MENU CONFIGURATION DATA

You may save the current Menu configuration data to the CF card, for archive purposes or for quick changes in extensive transceiver settings for different operating applications.

1. Press the [F3](SAVE) key to open the Save window. If there are multiple file names already stored, select the desired file by pressing the [F6](▼) and [F7](▲) keys.



2. If you want to over-write the file name, go to step 3. If you do not want to over-write the data on an existing file name, and want to save the data in the new file. Press the [F4](FILE) key; now enter the desired file name from your keyboard (the file extension will be “.mep” for Menu data).

3. Press the [F3](GO) key to save the data into the CF card.

If you wish to cancel the saving of the data, press the [F2](CANCEL) key.

Advice: When the ERROR message “PLEASE CHECK A DISK” is displayed at the right side of the MEM CARD notation, please confirm that the CF card is inserted correctly into its slot.

When the memory data is saved in the CF card under a previously-used file name, the old/previous data will be over-written and the old data erased.



↑
Press [F3](SAVE)
↓



↑
Press [F3](GO)

USING THE MENU MODE

LOADING MENU DATA

Loading Menu Data from the CF Card

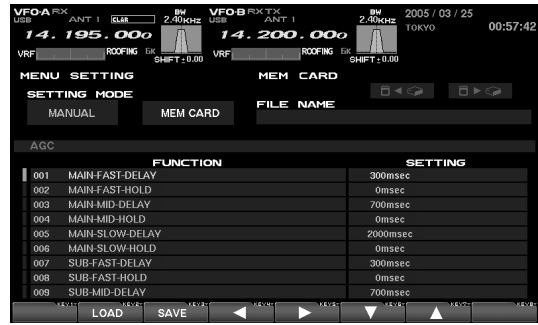
1. Press the [F2](LOAD) key to open the "Load" window. If there are several file names stored, select the desired file by pressing the [F6](▼) and [F7](▲) keys.



2. Press the [F3](GO) key to download the Menu configuration from the CF card to the radio. To cancel the download, press the [F2](CANCEL) key.

Advice: When the ERROR message "PLEASE CHECK A DISK" is displayed at the right side of the MEM CARD notation, please confirm that the CF card is inserted correctly into its slot.

When the Menu data is loaded from the CF card to the Menu on the FTdx9000, the old/previous data will be over-written, and the old data erased.



Press [F2](LOAD)



Press [F3](GO)

NOTE



Copyright 2005
VERTEX STANDARD CO., LTD.
All rights reserved

No portion of this manual
may be reproduced without
the permission of
VERTEX STANDARD CO., LTD.

Printed in Japan.



E H O 1 O H 1 1 O

0506i-AY